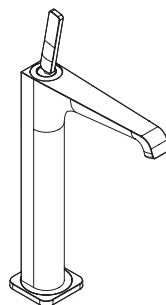
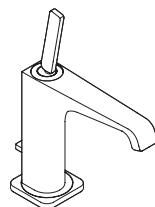


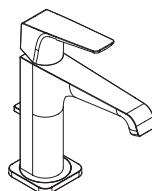
AXOR



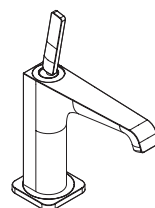
AXOR Citterio E
36104XX3
36150XX9
36151009



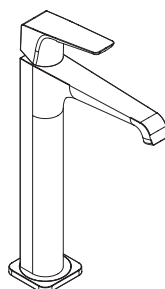
AXOR Citterio E
36131XX9
36132009



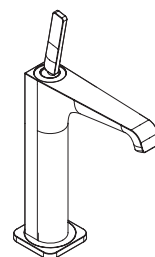
AXOR Citterio E
36154XX9
36155009



AXOR Citterio E
36101XX3



AXOR Citterio E
36152XX9
36153009



AXOR Citterio E
36156XX9
36157009

EN / Instructions for use / Assembly instructions
DE / Gebrauchsanleitung / Montageanleitung

02
03

INSTALLATION

⚠ SAFETY NOTES

- ⚠ Gloves should be worn during installation to prevent crushing and cutting injuries.
- ⚠ The product may only be used for bathing, hygienic and body cleaning purposes.
- ⚠ The hot and cold supplies must be of equal pressures.

INSTALLATION INSTRUCTIONS

- / Prior to installation, inspect the product for transport damages. After it has been installed, no transport or surface damage will be honoured.
- / The pipes and the fixture must be installed, flushed and tested as per the applicable standards.
- / The plumbing codes applicable in the respective countries must be observed.
- / The drain valve must only be used as intended. It is not allowed to attach other objects to the drain valve, for example a semi-pedestal.

TECHNICAL DATA

Operating pressure: max. 1 MPa

Recommended operating pressure: 0,1 - 0,5 MPa

Test pressure: 1,6 MPa

(1 MPa = 10 bar = 147 PSI)

Hot water temperature: max. 60°C

Thermal disinfection: 70°C / 4 min

The product is exclusively designed for drinking water!

SYMBOL DESCRIPTION



Do not use silicone containing acetic acid!



ADJUSTMENT (see page 06)

To adjust the hot water limiter. Using a hot water limiter in combination with a continuous flow water heater is not recommended.



DIMENSIONS (see page 08)



FLOW DIAGRAM (see page 09)



SPARE PARTS (see page 10)

XX = Colors

00 = Chrome Plated

14 = Brushed Bronze

25 = Brushed Gold-Optic

30 = Polished Redgold

31 = Brushed Redgold

33 = Polished Black Chrome

34 = Brushed Black Chrome

67 = Matt Black

80 = Stainless Steel Optic

82 = Brushed Nickel

95 = Brushed Brass

99 = Gold Plated

SPECIAL ACCESSORIES

(order as an extra)



/ special tool #58085000 (see page 04)



/ Installation putty (see page 05)



CLEANING (see page 07)



OPERATION (see page 07)

Hansgrohe recommends not to use as drinking water the first half liter of water drawn in the morning or after a prolonged period of non-use.



⚠ SICHERHEITSHINWEISE

- ⚠ Bei der Montage müssen zur Vermeidung von Quetsch- und Schnittverletzungen Handschuhe getragen werden.
- ⚠ Das Produkt darf nur zu Bade-, Hygiene- und Körperreinigungszwecken eingesetzt werden.
- ⚠ Große Druckunterschiede zwischen den Kalt- und Warmwasseranschlüssen müssen ausgeglichen werden.

MONTAGEHINWEISE

- / Vor der Montage muss das Produkt auf Transportschäden untersucht werden. Nach dem Einbau werden keine Transport- oder Oberflächenschäden anerkannt.
- / Die Leitungen und die Armatur müssen nach den gültigen Normen montiert, gespült und geprüft werden.
- / Die in den Ländern jeweils gültigen Installationsrichtlinien sind einzuhalten.
- / Das Ablaufventil darf nur zum bestimmungsgemäßen Gebrauch verwendet werden. Das Befestigen von anderen Gegenständen z. B. einer Halbsäule an dem Ablaufventil ist nicht zulässig.

TECHNISCHE DATEN

Betriebsdruck: max. 1 MPa
 Empfohlener Betriebsdruck: 0,1 - 0,5 MPa
 Prüfdruck: 1,6 MPa
 (1 MPa = 10 bar = 147 PSI)

Heißwassertemperatur: max. 60°C
 Thermische Desinfektion: 70°C / 4 min

Das Produkt ist ausschließlich für Trinkwasser konzipiert!

SYMBOLERKLÄRUNG



Kein essigsäurehaltiges Silikon verwenden!



JUSTIERUNG (siehe Seite 06)

Einstellen der Warmwasserbegrenzung. In Verbindung mit Durchlauferhitzern ist eine Warmwassersperre nicht zu empfehlen.



MASS E (siehe Seite 08)



DURCHFLUSSDIAGRAMM
 (siehe Seite 09)



SERVICETEILE (siehe Seite 10)

XX = Farbcodierung
 00 = Chrom

14 = Brushed Bronze
 25 = Brushed Gold-Optik
 30 = Polished Redgold
 31 = Brushed Redgold
 33 = Polished Black Chrome
 34 = Brushed Black Chrome
 67 = Mattschwarz
 80 = Edelstahl-Optik
 82 = Brushed Nickel
 95 = Brushed Brass
 99 = Gold-Optik

SONDERZUBEHÖR

(nicht im Lieferumfang enthalten)



/ Montageschlüssel #58085000
 (siehe Seite 04)



/ Installationskitt (siehe Seite 05)



REINIGUNG (siehe Seite 07)

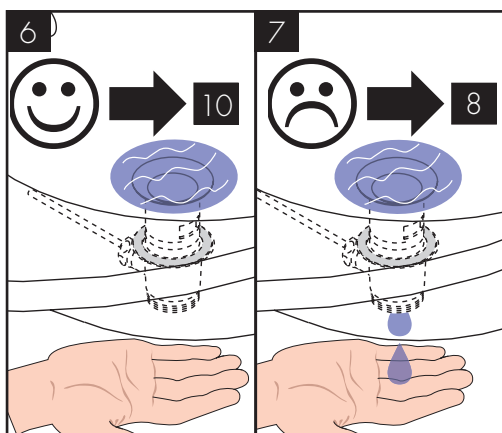
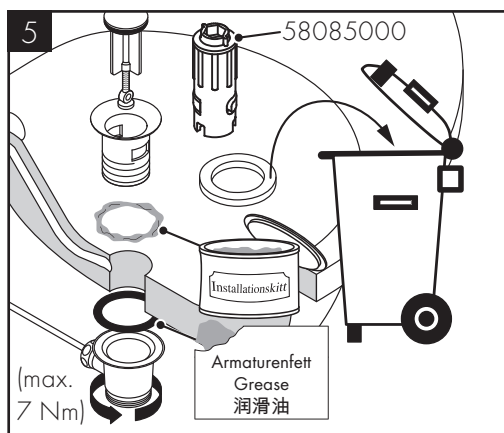
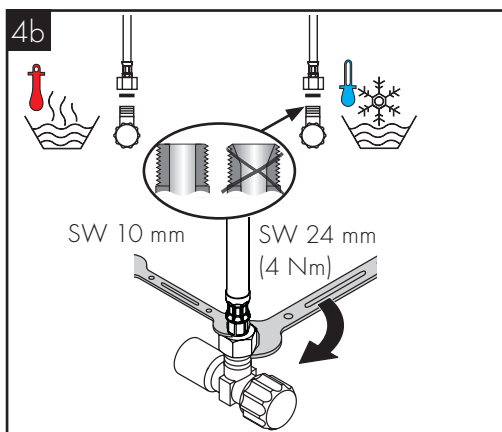
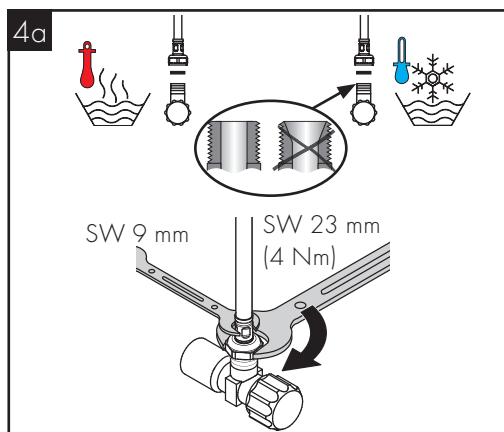
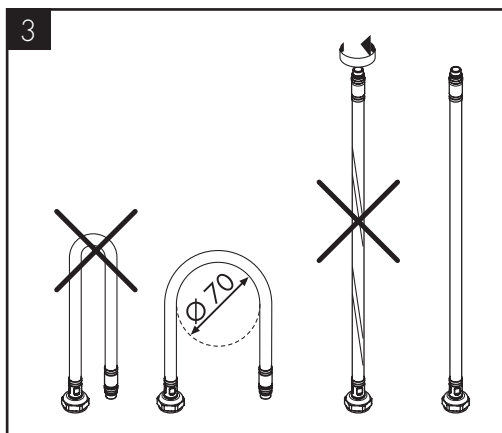
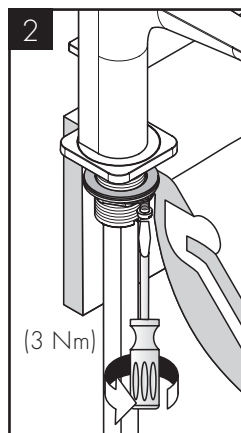
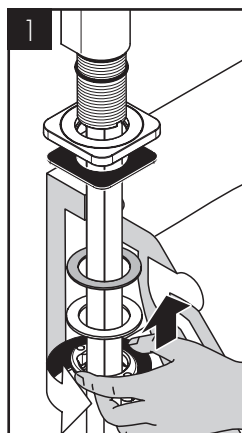


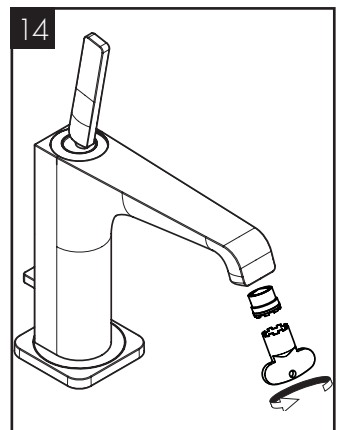
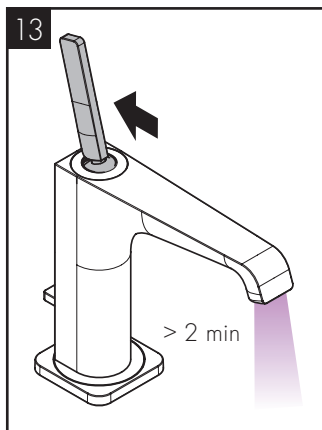
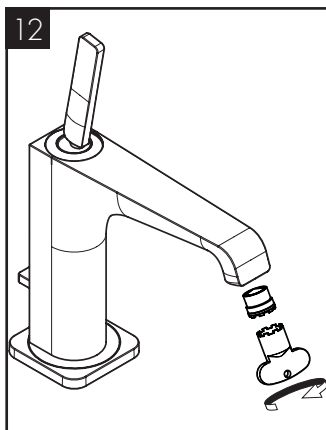
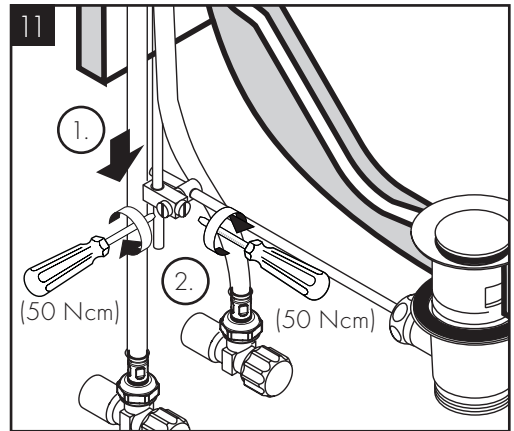
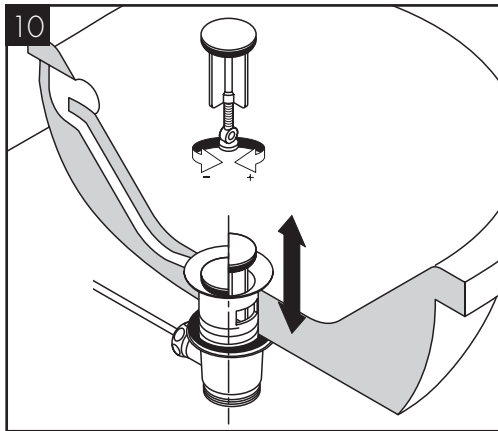
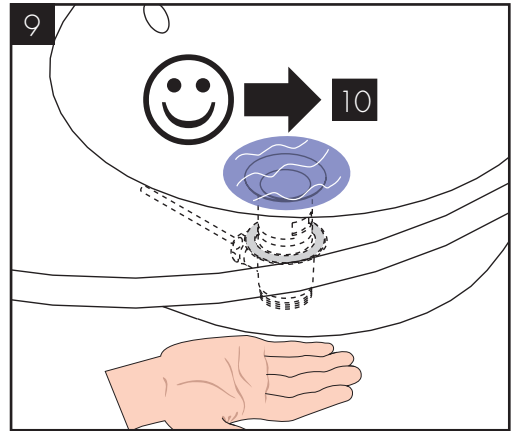
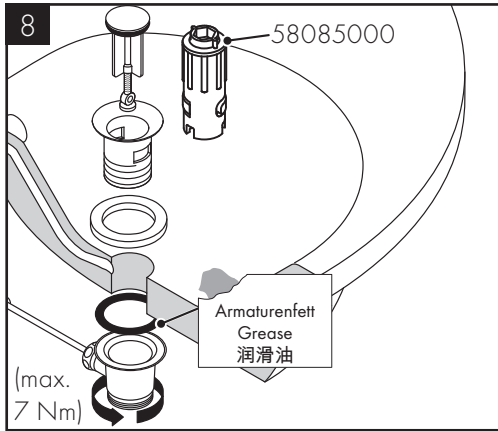
BEDIENUNG (siehe Seite 07)

Hansgrohe empfiehlt, morgens oder nach längeren Stagnationszeiten den ersten halben Liter nicht als Trinkwasser zu verwenden.

MONTAGE (siehe Seite 04)





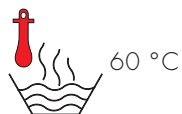




06

AXOR Citterio E

36152XX9 / 36153009 / 36154XX9 / 36155009



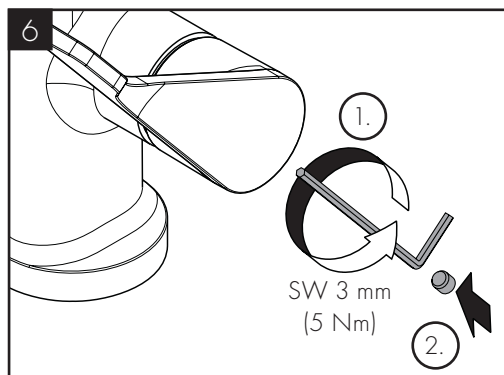
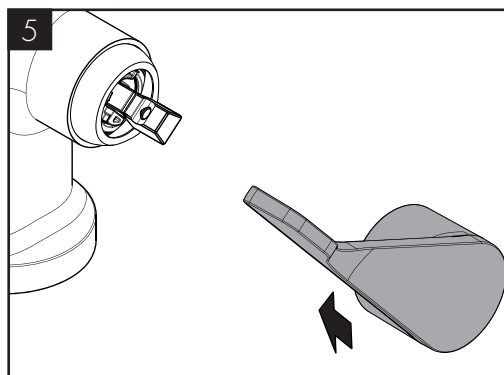
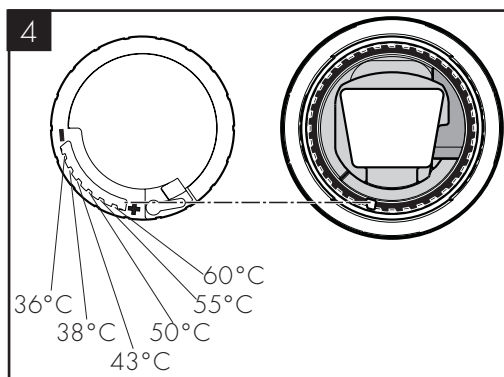
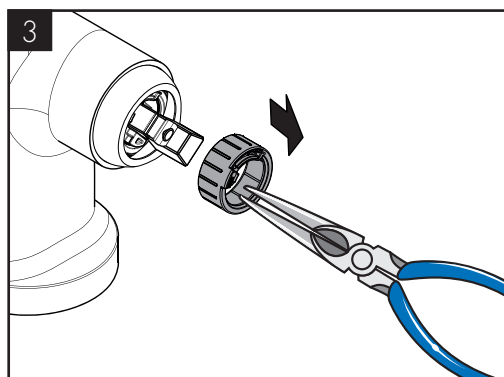
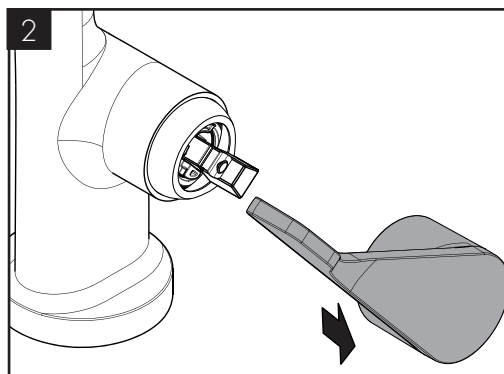
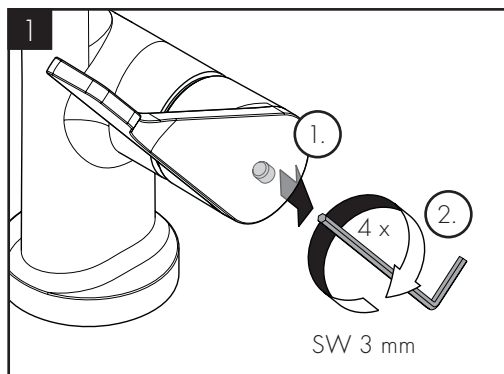
60 °C



10 °C



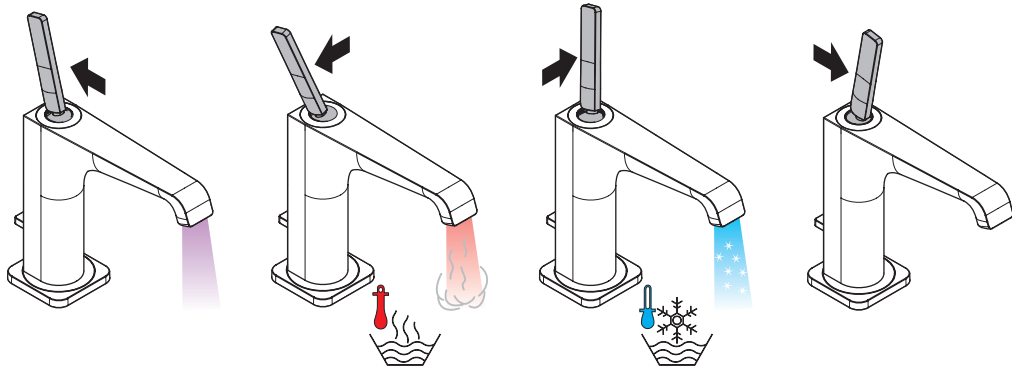
0,3 MPa





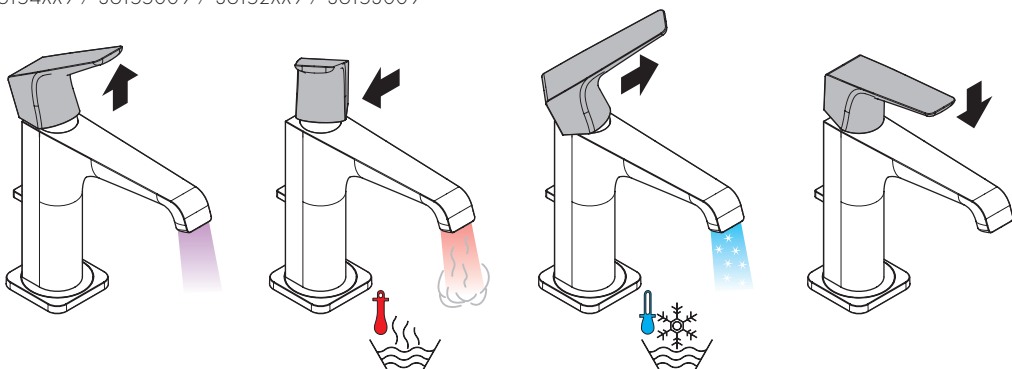
AXOR Citterio E

36131XX9 / 36132009 / 36156XX9 / 36157009 / 36150XX9 / 36151009 / 36101003 / 36104XX3

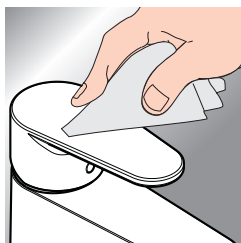
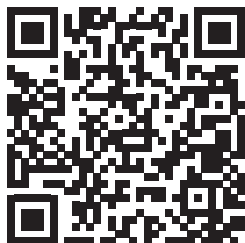


AXOR Citterio E

36154XX9 / 36155009 / 36152XX9 / 36153009



www.axor-design.com/cleaning-recommendation

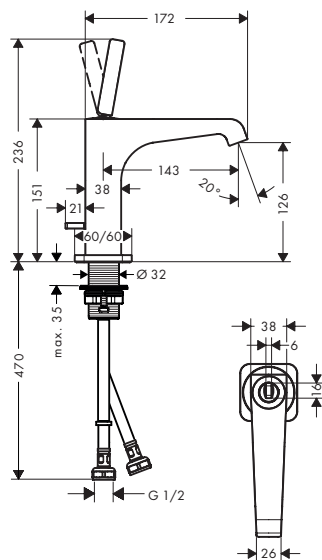


EN / Cleaning recommendation/Warranty/Contact

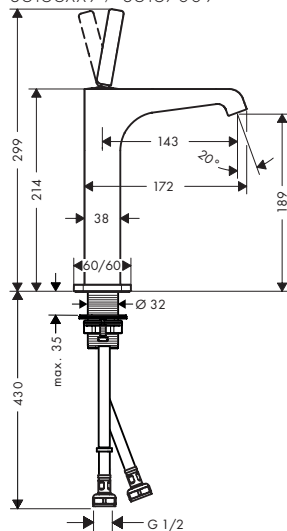
DE / Reinigungsempfehlung/Garantie/Kontakt



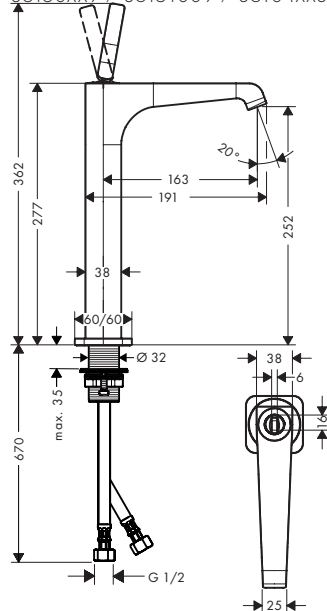
AXOR Citterio E
36131XX9 / 36132009



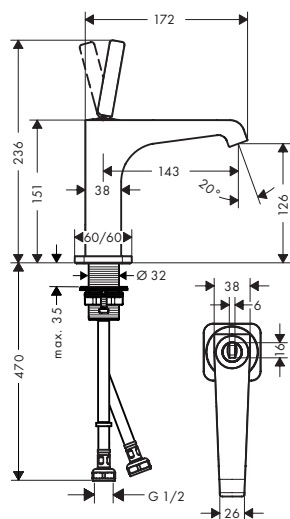
AXOR Citterio E
36156XX9 / 36157009



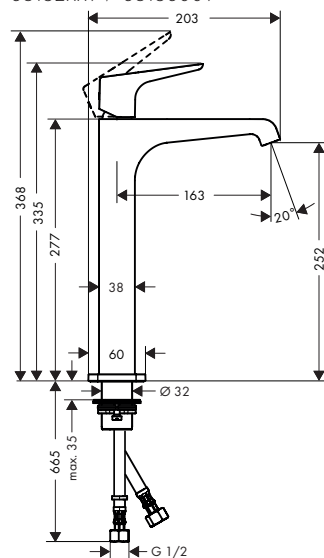
AXOR Citterio E
36150XX9 / 36151009 / 36104XX3



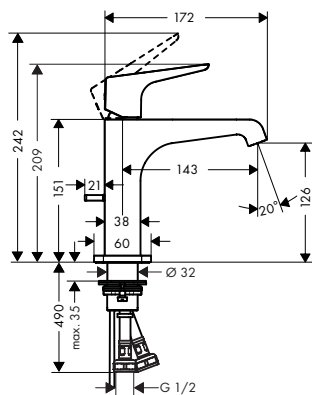
AXOR Citterio E
36101XX3



AXOR Citterio E
36152XX9 / 36153009

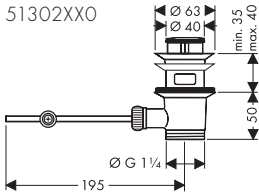


AXOR Citterio E
36154XX9 / 36155009

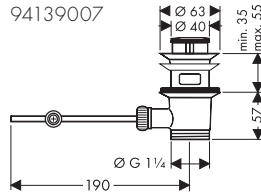




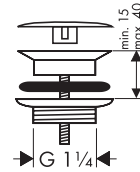
51302XX0



94139007

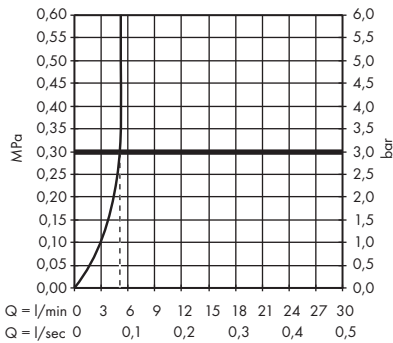


51301XX0

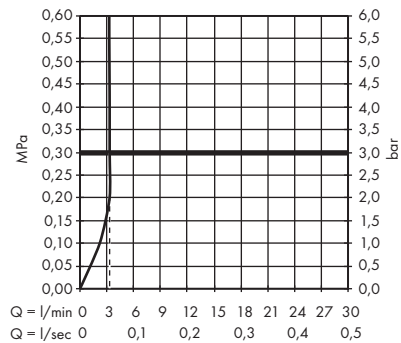


AXOR Citterio E

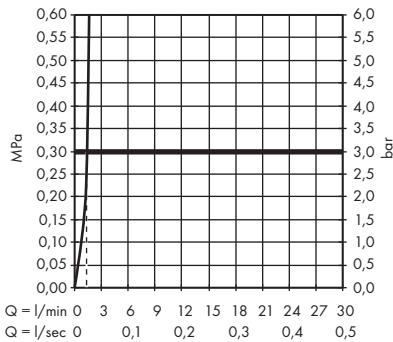
36101XX3 / 36104XX3



AXOR Citterio E

36131XX9 / 36156XX9 / 36150XX9 /
36154XX9 / 36152XX9

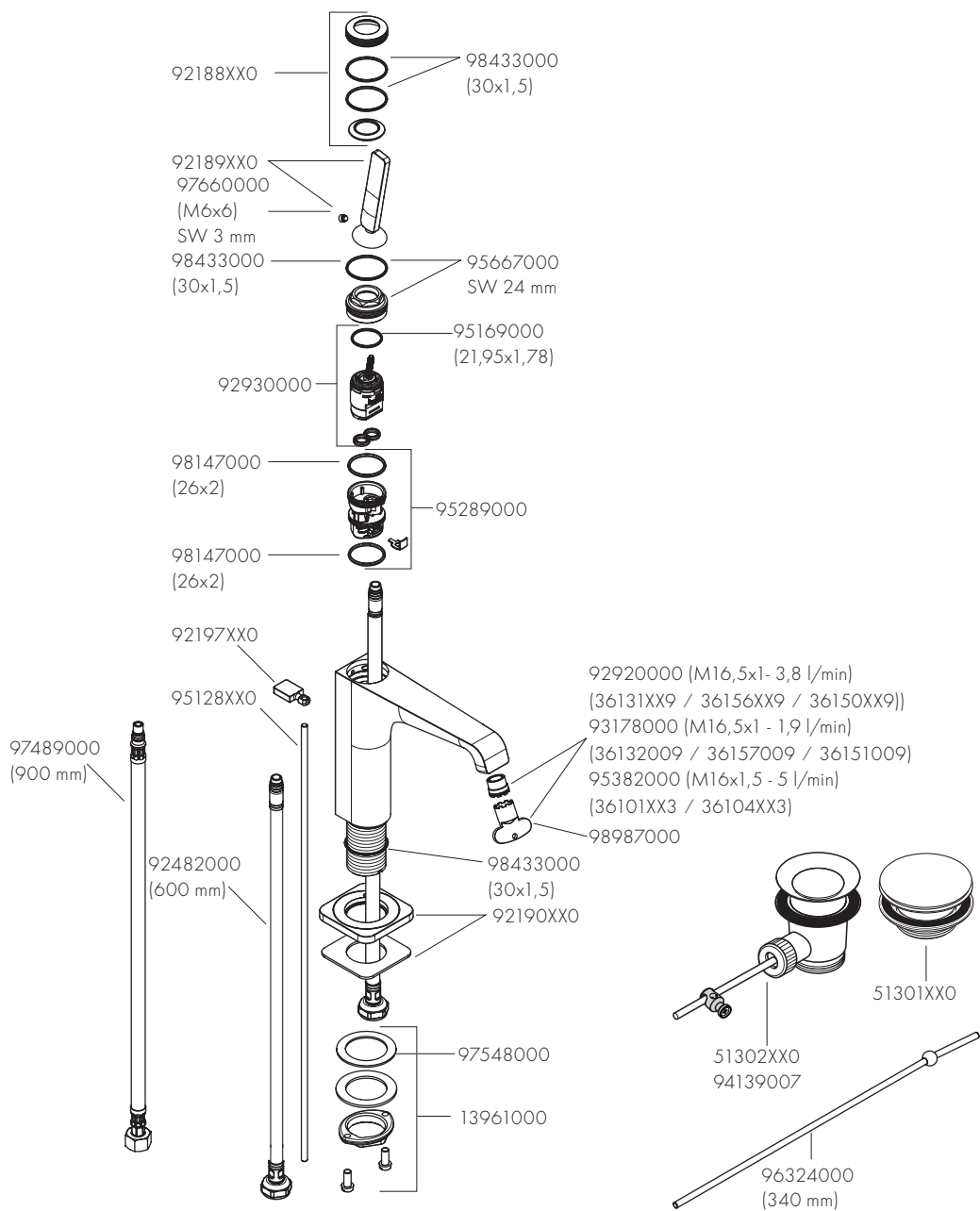
AXOR Citterio E

36132009 / 36157009 / 36151009 /
36155009 / 36153009



AXOR Citterio E

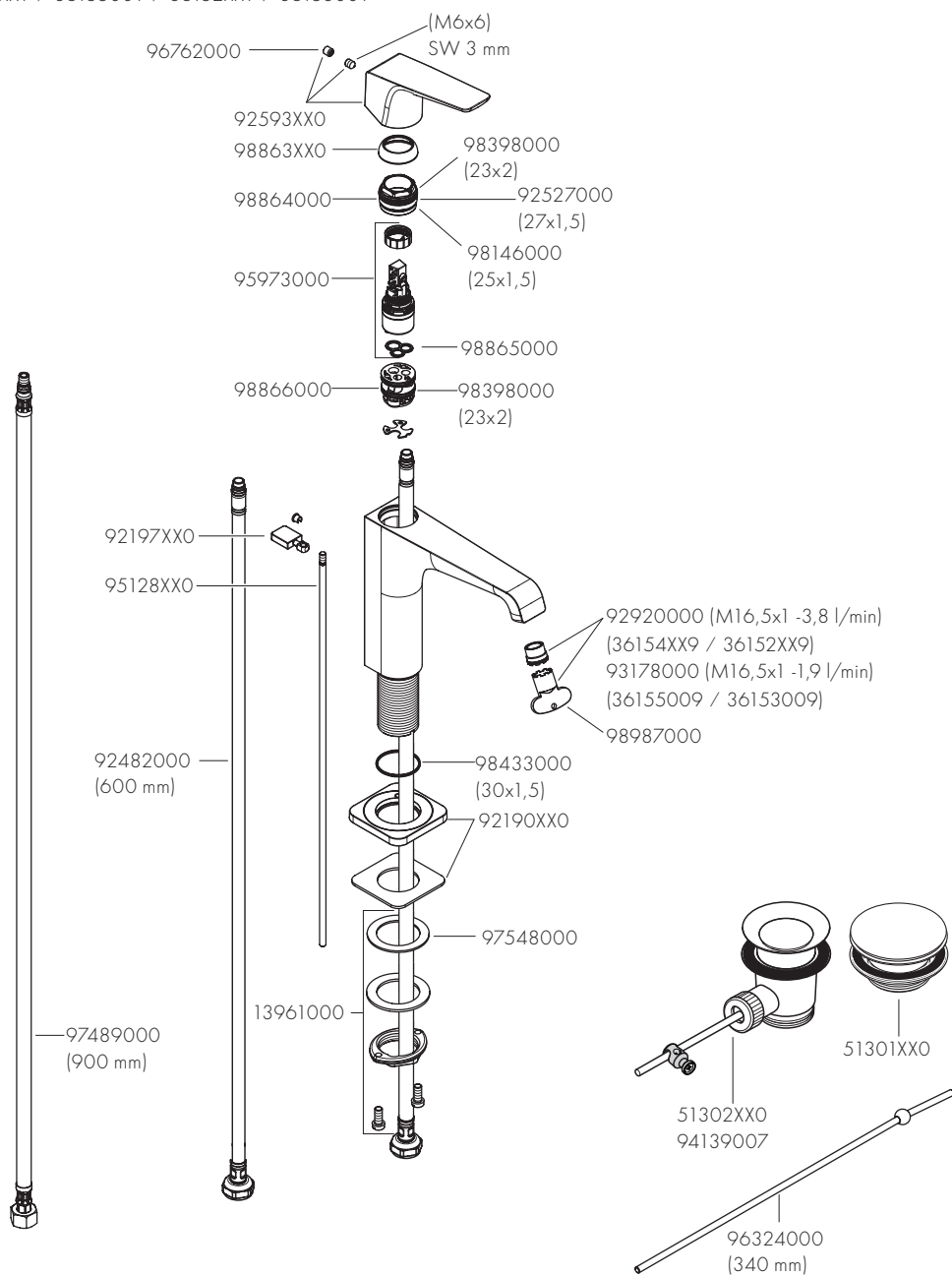
36131XX9 / 36132009 / 36156XX9 / 36157009 / 36150XX9 / 36151009 / 36101XX3 / 36104XX3





AXOR Citterio E

36154XX9 / 36155009 / 36152XX9 / 36153009



AXOR

AXOR / Hansgrohe SE
Austraße 5-9
77761 Schiltach
Deutschland

info@axor-design.com
axor-design.com

07/2022
9.02309.32