

## AXOR Citterio

**3-hole basin mixer for concealed installation wall-mounted with spout 226 mm, lever handles and plate**

Surfaces: **Chrome** Article Number: **39148000**



### Description

#### product features

- consists of: 3-hole basin mixer for concealed installation wall-mounted, waste set
- projection 226 mm
- normal spray
- flow rate at 3 bar: 5 l/min
- ceramic valves hot/ cold 90°
- suitable for continuous flow water heaters
- non-closing waste set
- connection dimension: DN15

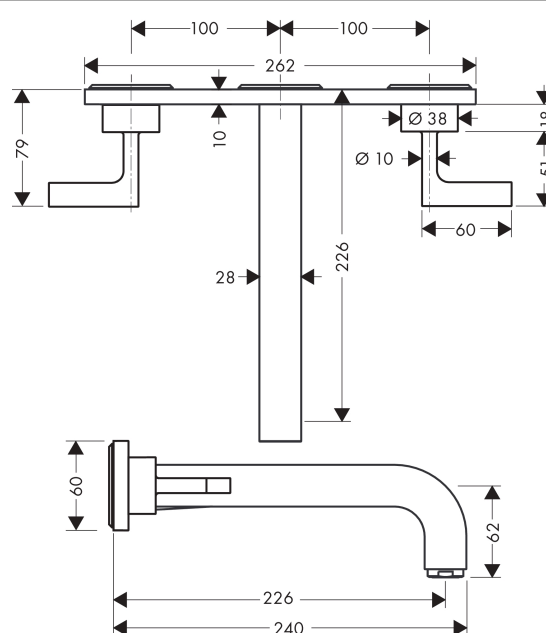
### Technology



### Product image



### Scale drawing



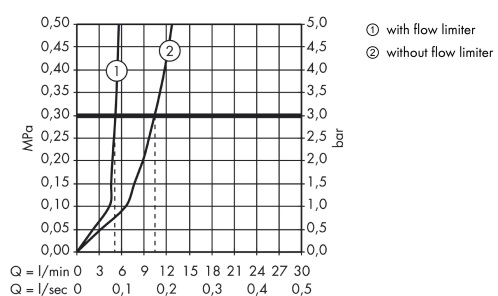
## AXOR Citterio

**3-hole basin mixer for concealed installation wall-mounted with spout 226 mm, lever handles and plate**

Surfaces: **Chrome** Article Number: **39148000**



### Flowchart



## AXOR Citterio

**3-hole basin mixer for concealed installation wall-mounted with spout 226 mm, lever handles and plate**

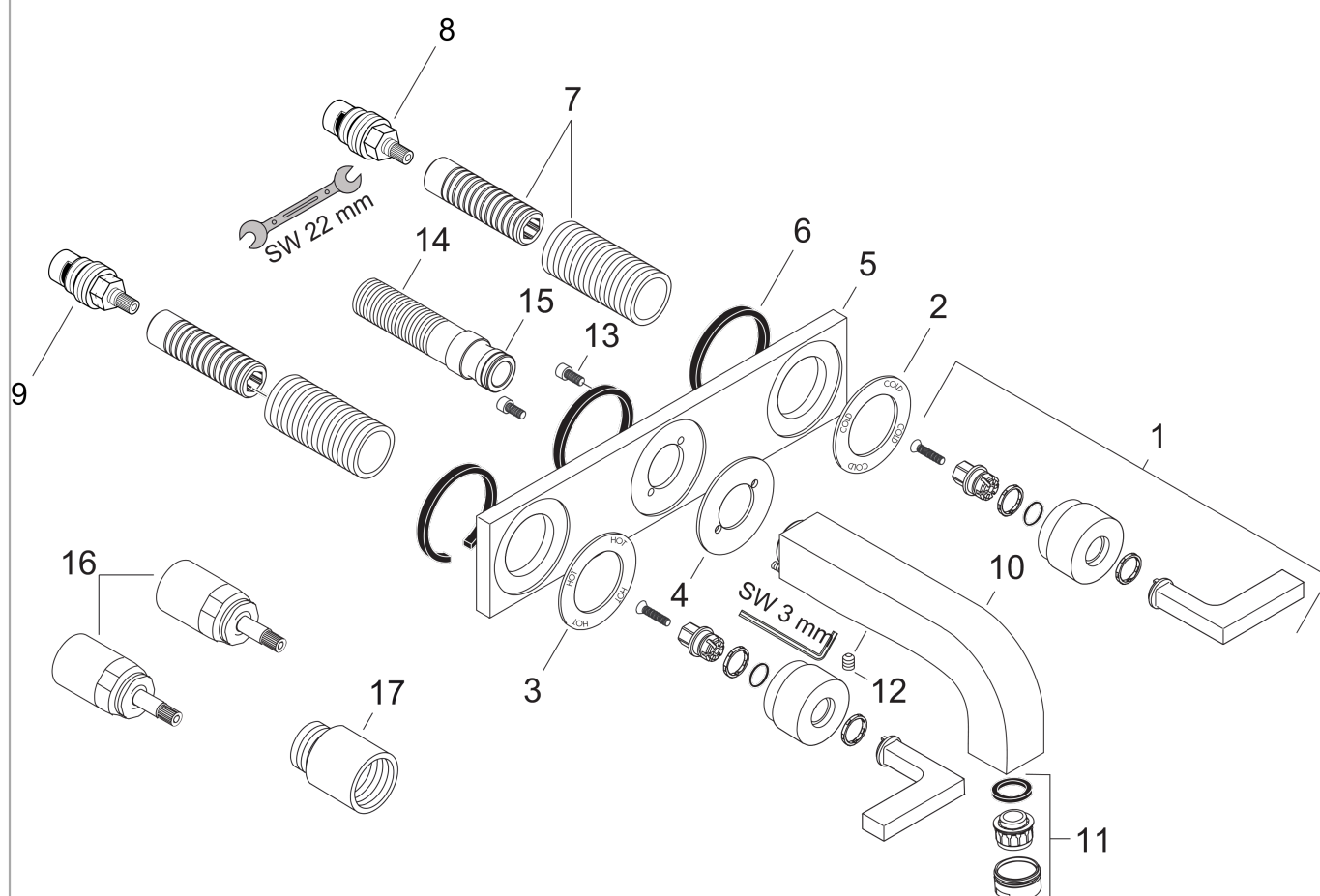
Surfaces: **Chrome**

Article Number: **39148000**



## Exploded Drawing

Year of production: >04/03



## AXOR Citterio

**3-hole basin mixer for concealed installation wall-mounted with spout 226 mm, lever handles and plate**

Surfaces: **Chrome** Article Number: **39148000**



## Spare part list

Year of production: >04/03

Pos.	Description	Article Number	PC	PU
1	handle	39296000	0	1
2	escutcheon hot water	96759000	0	1
3	escutcheon cold water	96758000	0	1
4	escutcheon for spout	96760000	0	1
5	escutcheon	96757000	0	1
6	seal	97530000	0	1
7	fixing set	96392000	0	1
8	shut off unit right closing	96350000	0	1
9	shut off unit left closing	96351000	0	1
10	spout 220 mm	97239000	0	1
11	aerator M24x1 (7 l/min)	13085000	0	1
12	hollow set screw M6x6	97660000	0	1
13	hexagon socket screw M4x10	97661000	0	1
14	connecting thread G½	97228000	0	1
15	O-ring 16x2,5	98134000	0	1
16	extension 25 mm	96259000	0	1
17	extension 25 mm	95413000	0	1
a	pop up waste	50001000	0	1
b	concealed item	10303180	0	1