

AXOR Citterio

3-hole basin mixer for concealed installation wall-mounted with spout 162 mm, lever handles and escutcheons

Surfaces: **Chrome** Article Number: **39315000**



Description

product features

- consists of: 3-hole basin mixer for concealed installation wall-mounted, waste set
- projection 162 mm
- normal spray
- flow rate at 3 bar: 5 l/min
- ceramic valves hot/ cold 90°
- suitable for continuous flow water heaters
- non-closing waste set
- connection dimension: DN15

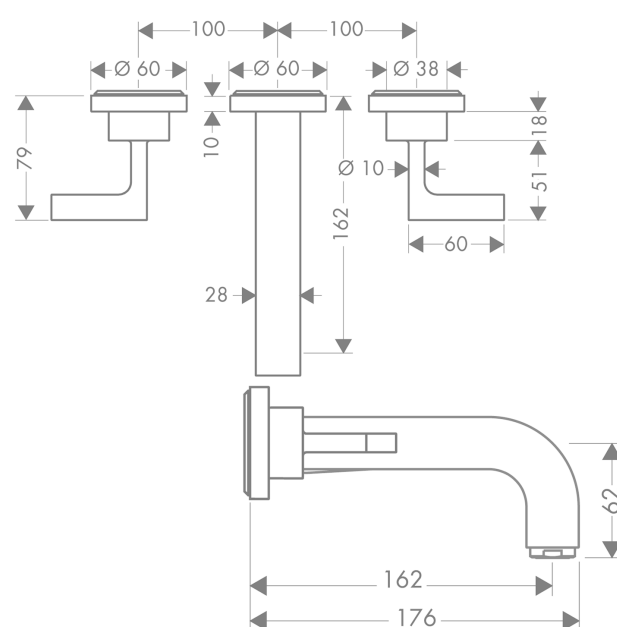
Technology



Product image



Scale drawing



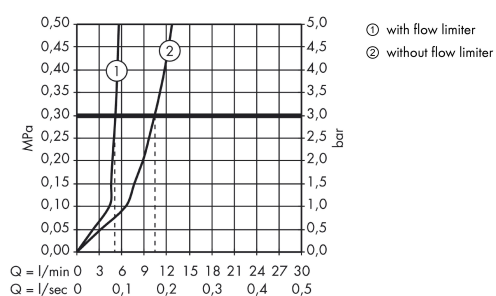
AXOR Citterio

3-hole basin mixer for concealed installation wall-mounted with spout 162 mm, lever handles and escutcheons

Surfaces: **Chrome** Article Number: **39315000**



Flowchart

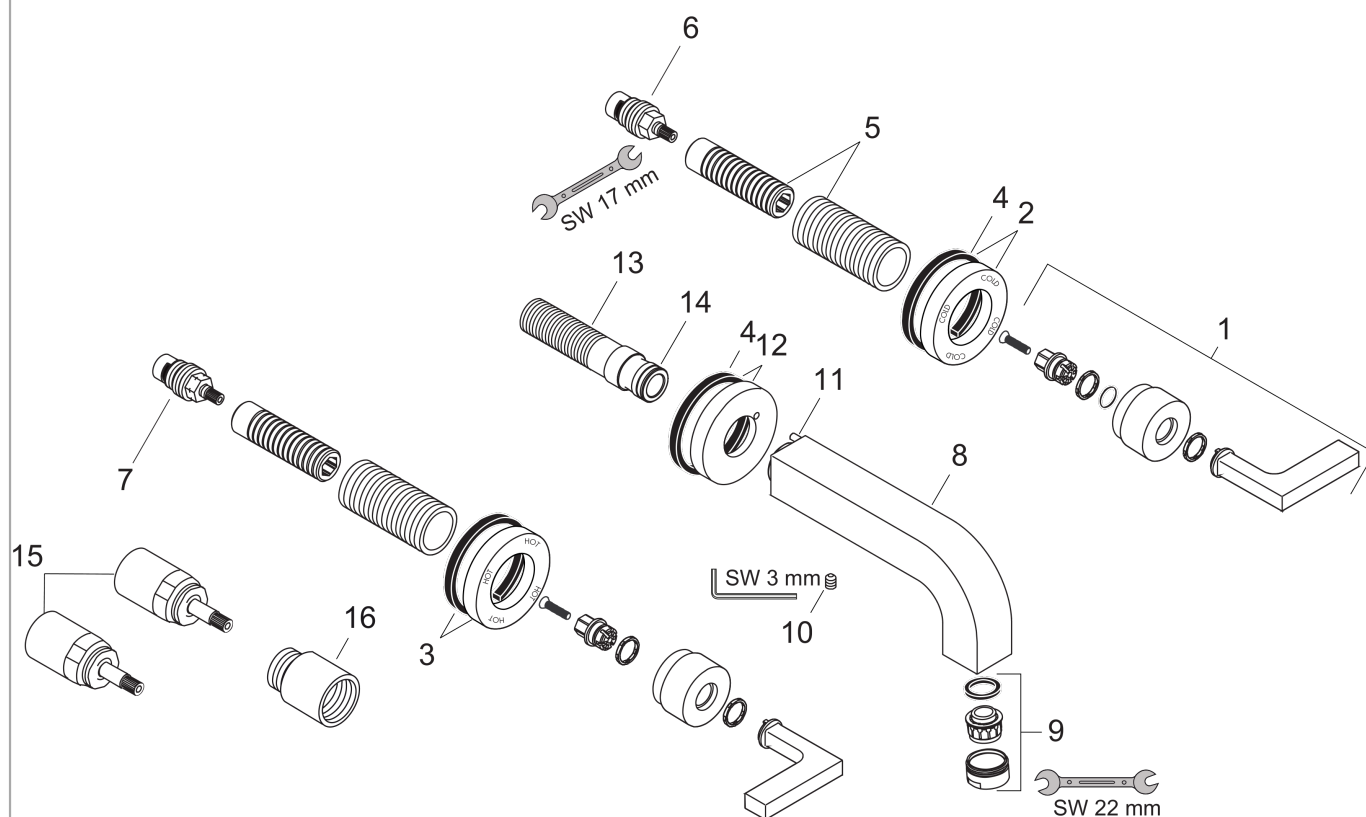


AXOR Citterio
3-hole basin mixer for concealed installation wall-mounted with spout 162 mm, lever handles
and escutcheons
 Surfaces: **Chrome** Article Number: **39315000**



Exploded Drawing

Year of production: >01/10



AXOR Citterio

3-hole basin mixer for concealed installation wall-mounted with spout 162 mm, lever handles and escutcheons

Surfaces: **Chrome** Article Number: **39315000**



Spare part list

Year of production: >01/10

Pos.	Description	Article Number	PC	PU
1	handle	39296000	0	1
2	escutcheon cold water	96754000	0	1
3	escutcheon hot water	96755000	0	1
4	seal	97530000	0	1
5	fixing set	96392000	0	1
6	shut off unit right closing	96350000	0	1
7	shut off unit left closing	96351000	0	1
8	spout 160 mm	97238000	0	1
9	aerator M24x1 (5 l/min)	13185000	0	1
10	hollow set screw M6x6	97660000	0	1
11	hollow set screw M4x16	97663000	0	1
12	escutcheon for spout	96756000	0	1
13	connecting thread G½	97228000	0	1
14	O-ring 16x2,5	98134000	0	1
15	extension 25 mm	96259000	0	1
16	extension 25 mm	95413000	0	1
a	pop up waste	50001000	0	1
b	concealed item	10303180	0	1
c	mounting-set V+B	96142000	0	1