

**AXOR Citterio**  
**Single lever basin mixer 190 with pin handle and waste set**  
 Surfaces: **Chrome**    Article Number: **39037000**



## Description

### product features

- consists of: single lever basin mixer, waste set
- ComfortZone 190
- projection 171 mm
- normal spray
- flow rate at 3 bar: 5 l/min
- joystick ceramic cartridge
- suitable for continuous flow water heaters
- non-closing waste set
- connection dimension: DN15
- handle position on the side: bottom-side at the base body (not suitable for wash bowls)
- SVGW 1208-6072
- DVGW NW-6506BT0603
- ACS 17 ACC LY 518, valide jusqu'au 02.10.2022
- Kiwa UK 1508716
- WRAS 1509302
- Kiwa K6161\_Mechanical Mixers EN817
- SINTEF 1423
- STA 1393

## Technology



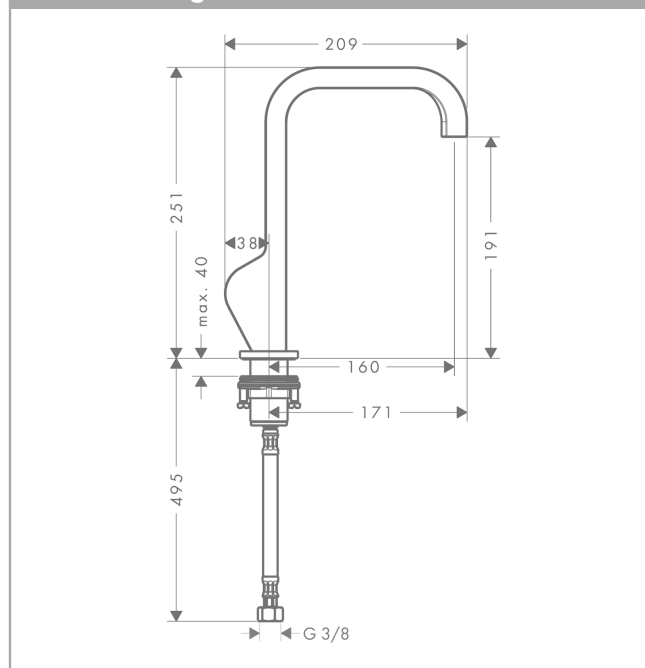
**AXOR Citterio**  
**Single lever basin mixer 190 with pin handle and waste set**  
 Surfaces: **Chrome** Article Number: **39037000**



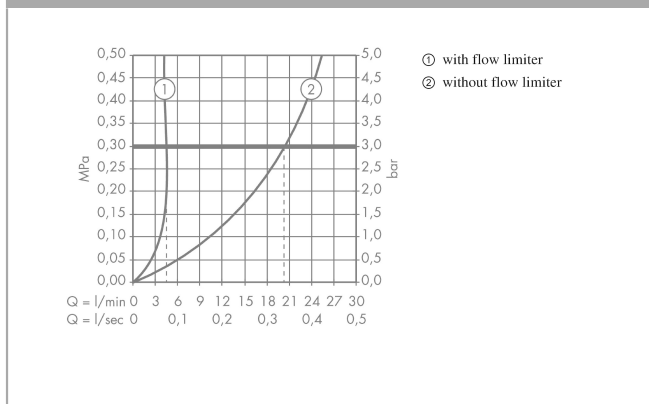
**Product image**



**Scale drawing**



**Flowchart**

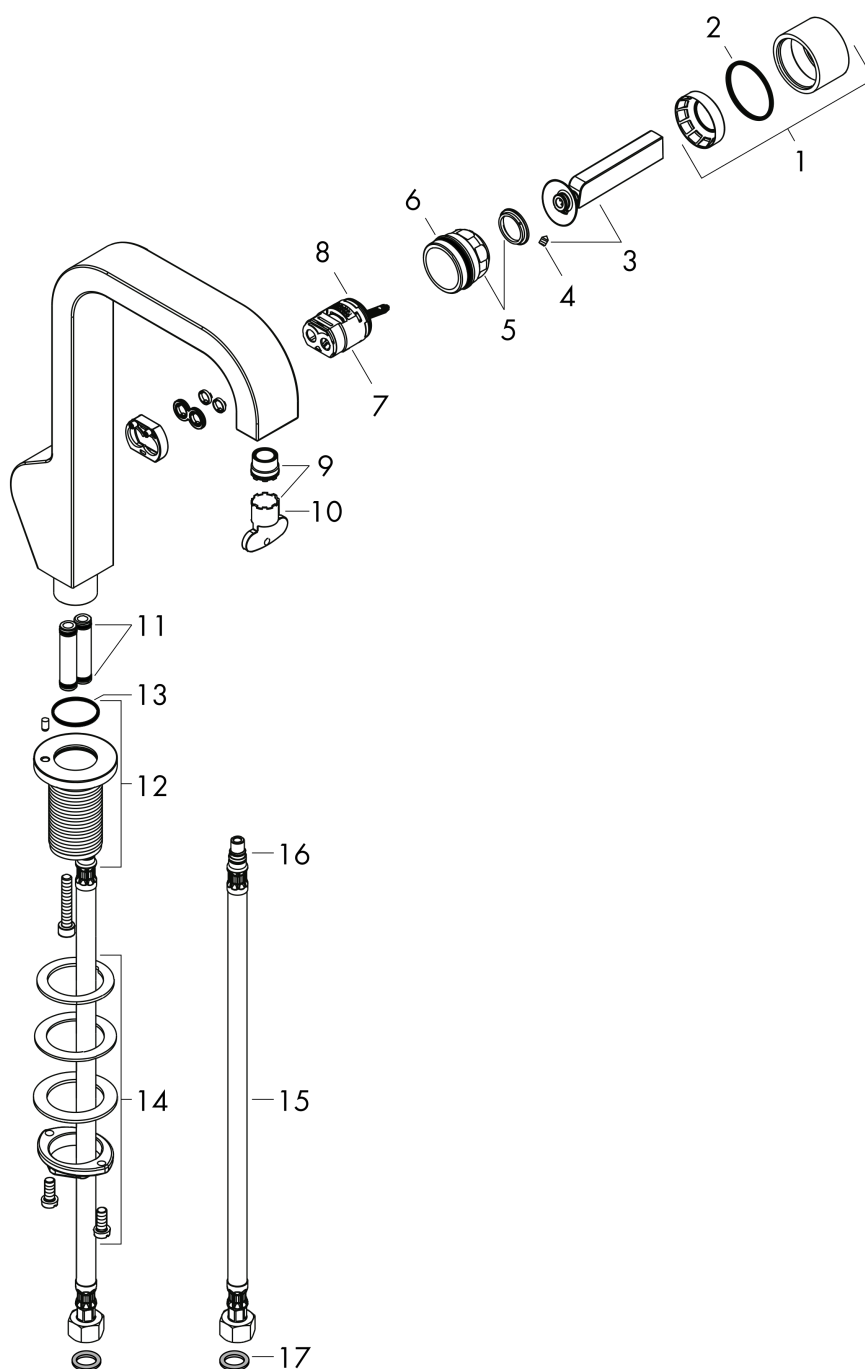


**AXOR Citterio**  
**Single lever basin mixer 190 with pin handle and waste set**  
 Surfaces: **Chrome** Article Number: **39037000**



## Exploded Drawing

Year of production: >08/14



**AXOR Citterio**  
**Single lever basin mixer 190 with pin handle and waste set**  
 Surfaces: **Chrome**    Article Number: **39037000**



## Spare part list

Year of production: >08/14

Pos.	Description	Article Number	PC	PU
1	cover cap	95681000	0	1
2	O-ring 34x2	98383000	0	1
3	handle	95682000	0	1
4	hollow set screw M4x6	97767000	0	1
5	nut	95683000	0	1
6	O-Ring 30x2	98186000	0	1
7	cartridge, assy	96339000	0	1
8	O-ring 21,95x1,78	95169000	0	1
9	aerator laminar M16,5x1 (5 l/min)	93118000	0	1
10	special tool	98987000	0	1
11	O-ring 7x2	98419000	0	1
12	escutcheon	95685000	0	1
13	O-ring 26x1,5	98390000	0	1
14	fixing set (Ø 32)	13961000	0	1
15	connection hose 600 mm M8x0,75 G3/8	96556000	0	1
16	O-ring 7x1,5	98422000	0	1
17	sealing set	95581000	0	1
a	fixation extension 35 mm	13898000	0	1
b	service tool for disassembling the handle	92124000	0	1