

AXOR Montreux
2-handle basin mixer 210 with cross handles and waste set
 Finish: **Chrome** Article Number: **16506000**



product features

- consists of: 2-handle basin mixer, waste set
- ComfortZone: 210
- projection: 175 mm
- spout height: 211 mm
- handle variant: cross handle
- swivel range 120°
- spray type: laminar spray
- maximum flow rate at 3 bar: 5 l/min
- ceramic valves hot/cold 90°
- suitable for continuous flow water heaters
- non-closing waste set
- connection type: G 3/8 hose connections
- connection dimension: DN15
- EU taxonomy: max. 6 l/min - Substantial Contribution (SC) possible

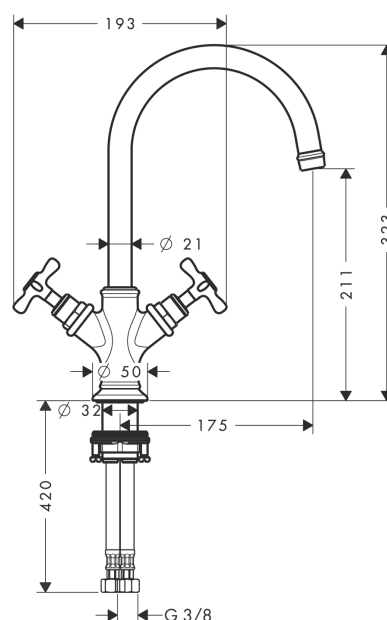
Technology



Product image



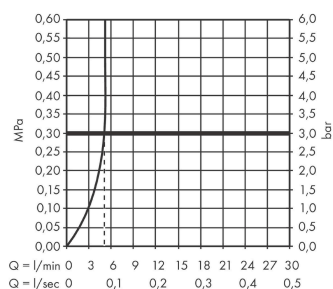
Scale drawing



AXOR Montreux
2-handle basin mixer 210 with cross handles and waste set
 Finish: **Chrome** Article Number: **16506000**



Flowchart

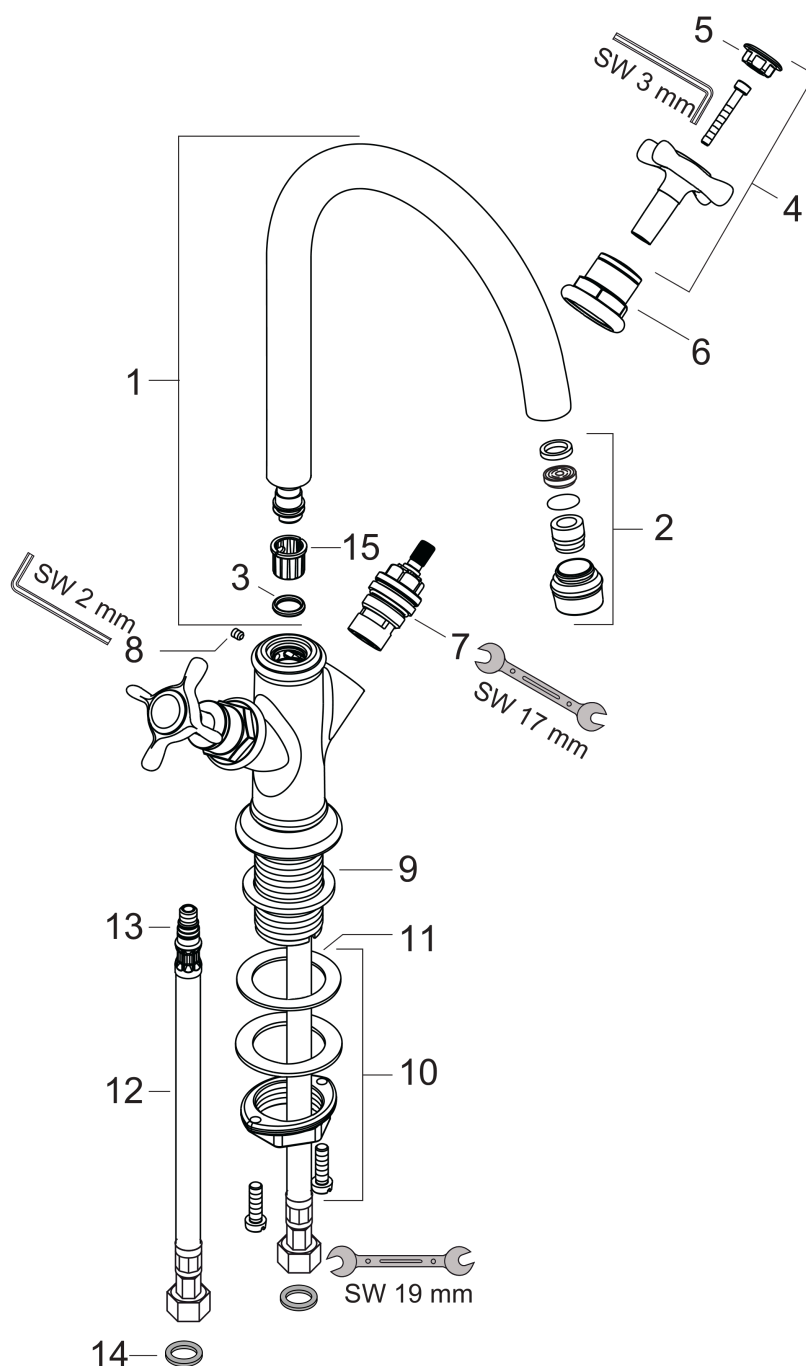


AXOR Montreux
2-handle basin mixer 210 with cross handles and waste set
 Finish: **Chrome** Article Number: **16506000**



Exploded Drawing

Year of production: >10/10



AXOR Montreux
2-handle basin mixer 210 with cross handles and waste set
 Finish: **Chrome** Article Number: **16506000**



Spare part list

Year of production: >10/10

| Pos. | | Article Number | PC | PU |
|------|---|----------------|----|----|
| 1 | spout cpl. | 97990000 | 17 | 1 |
| 2 | aerator M18x1 (5 l/min) | 95378000 | 9 | 1 |
| 3 | O-ring 11x2 | 98127000 | 1 | 1 |
| 4 | handle | 16291000 | 13 | 1 |
| 5 | set of screw covers, cold / hot water / neutral | 97987000 | 11 | 1 |
| 6 | sleeve | 97993000 | 10 | 1 |
| 7 | shut off unit right closing | 94009000 | 9 | 1 |
| 8 | hollow set screw M4x5 | 98731000 | 1 | 1 |
| 9 | flat seal | 98749000 | 2 | 1 |
| 10 | fixing set (Ø 32) | 13961000 | 7 | 1 |
| 11 | lever collar | 97548000 | 1 | 1 |
| 12 | connection hose 450 mm M8x0,75 G3/8 | 97206000 | 8 | 1 |
| 13 | O-ring 7x1,5 | 98422000 | 1 | 1 |
| 14 | sealing set | 95581000 | 2 | 1 |
| 15 | lever collar | 92849000 | 3 | 1 |
| a | waste | 50001000 | 99 | 1 |
| b | fixation extension 35 mm | 13898000 | 12 | 1 |