

AXOR Uno

Single lever basin mixer for concealed installation with spout 225 mm and escutcheons wall-mounted

Surfaces: **Chrome** Article Number: **38116000**



Description

product features

- projection 225 mm
- normal spray
- flow rate at 3 bar: 5 l/min
- joystick ceramic cartridge
- suitable for continuous flow water heaters
- non-closing flush grated valve
- connection dimension: DN15
- handle can be positioned on the right or left, depends on the basic set installation

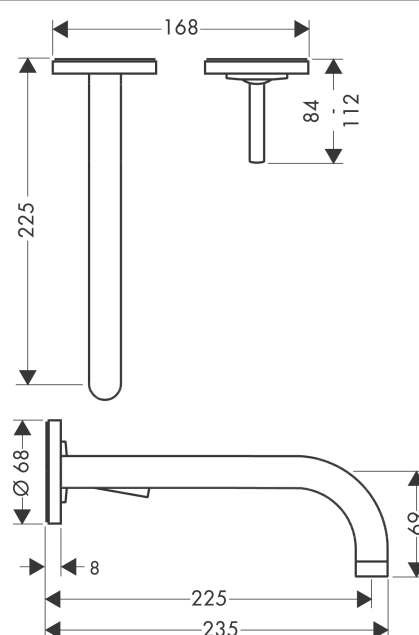
Technology



Product image



Scale drawing



AXOR Uno

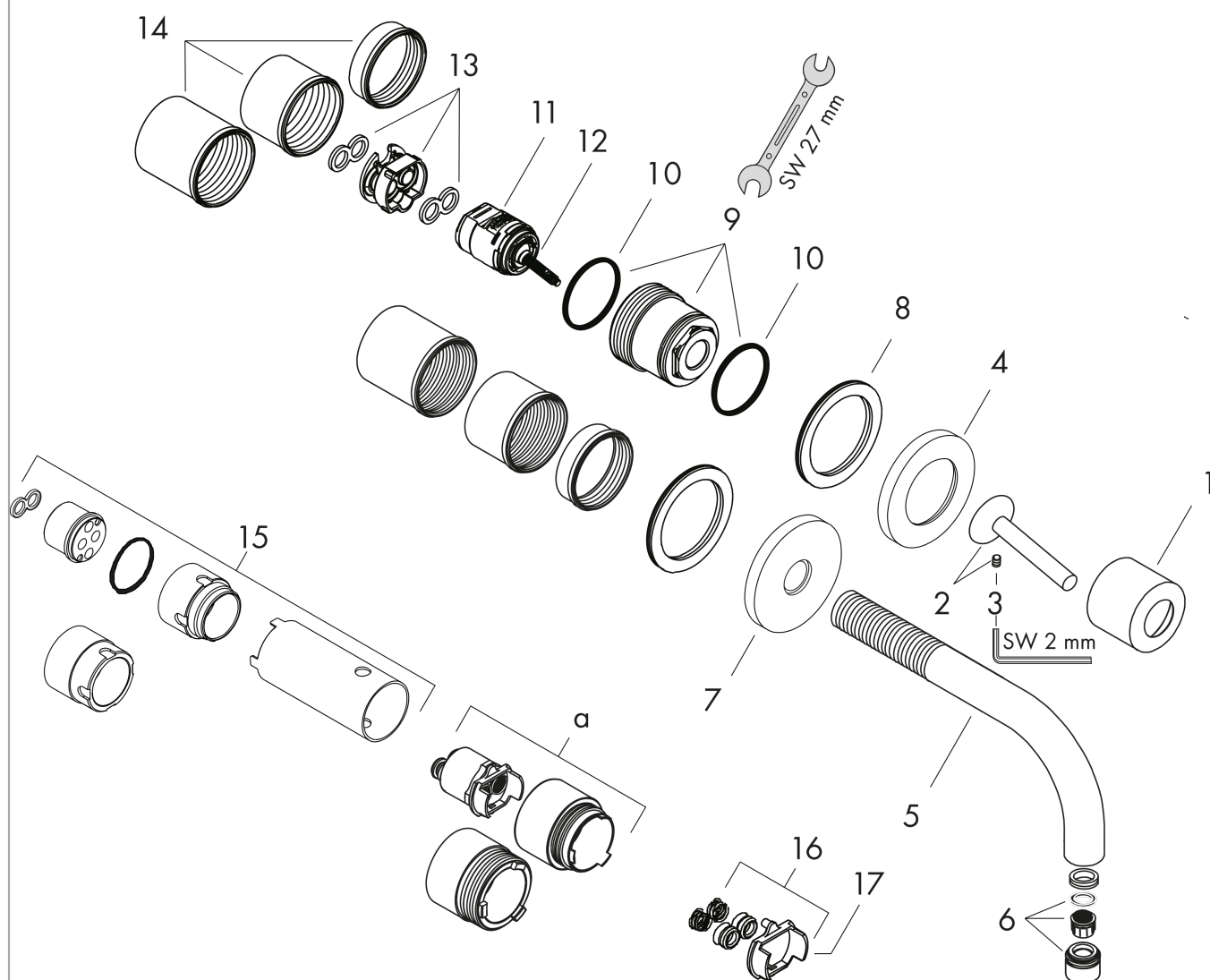
Single lever basin mixer for concealed installation with spout 225 mm and escutcheons wall-mounted

Surfaces: **Chrome** Article Number: **38116000**



Exploded Drawing

Year of production: >01/10



AXOR Uno

Single lever basin mixer for concealed installation with spout 225 mm and escutcheons wall-mounted

Surfaces: **Chrome** Article Number: **38116000**



Spare part list

Year of production: >01/10

Pos.	Description	Article Number	PC	PU
1	flange	96908000	0	1
2	handle	10092000	0	1
3	hollow set screw M4x6	97767000	0	1
4	escutcheon for handle	96909000	0	1
5	spout 220 mm	97368000	0	1
6	aerator M18x1 (5 l/min)	95387000	0	1
7	escutcheon for spout	96910000	0	1
8	washer	97600000	0	1
9	nut	95645000	0	1
10	O-ring 34x2	98383000	0	1
11	cartridge, assy	96783000	0	1
12	O-ring 21,95x1,78	95169000	0	1
13	adapter for cartridge	95644000	0	1
14	fixing set	97971000	0	1
15	extension set 25 mm for 13622180	31971000	0	1
16	conversion kit	95643000	0	1
17	adapter for cartridge	97280000	0	1
a	extension set for 38111180	38982000	0	1
b	pop up waste	50001000	0	1
c	aerator laminar M18x1 (7 l/min)	96911000	0	1
d	base body	13622180	0	1
e	service tool for disassembling the handle	92124000	0	1