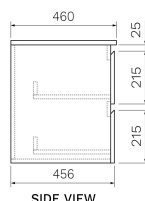
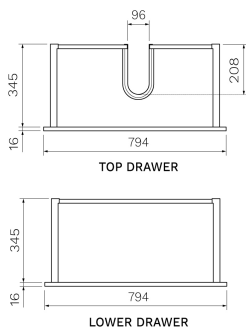
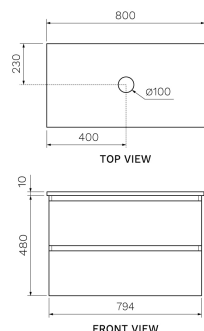




Pure Bianco 800 Wall Cabinet with Jazz Bianco Marble Top O'gee Edge

PJ-800-MW.O

The Pure Bianco 800 Wall Mounted Cabinet with Jazz Bianco Ogee [Natural Marble](#) Bench Top offers a versatile design. Pure Bianco provides both optimum craftsmanship and luxurious design. The premium moisture resistant [Multi-wood](#) joinery ensures lasting durability whilst the grey internal finish provides a stylish and sophisticated vanity. Basin sold separately. Comes with No Tap Hole, [wall mounted tapware](#) recommended. Note Matt White vanities are finished in [Polyurethane Paint](#).



Product type	Vanity Cabinets
Brand	PARISI
Collection	Pure Bianco Jazz
Range	Design
Designers	PARISI Design Team
WxDxH	800mm x 460mm x 490mm
Colour / Finish	<div>  Matt White </div>
Internal Colour:	Grey finish
Material	Multi-wood Premium Joinery Natural Marble
Tap Hole Options	No Tap Hole

Warranty	1 Year 10 Year Warranty
Availability	Stocked Item
Fixing Types	Wall Mounted
Features:	<ul style="list-style-type: none"> • Natural Marble Above Counter Bench Top with O'gee Bevel Edges • Double Drawer Design • Multi-wood Premium Joinery • Matt White Polyurethane finish • Finger-pull Handle • Luxury Silent Soft-function Drawer Mechanism • Basin sold separately
Function:	Soft close drawers
Care and Maintenance:	<p>Marble is a natural stone and must be cleaned with care. Remove dust from the surface using a soft dry microfibre or lintfree cloth. Using a soft damp cloth and a water-based cleaner, PH-neutral stone cleaner or a mild soap diluted in warm water, wipe down the entire marble counter-top. Marble is prone to water spots so always dry immediately when wet. Do not use anything abrasive, such as steel wool or scourers, or acidic, such as vinegar, windex, bleach, ammonia, as these can damage the marble. It is recommended to apply a marble sealant upon installation, and reapply annually.</p>
Installation Instructions:	<p>Basin sold separately. No tap hole, recommended for wall mounted tapware only. Suitable for wall plumbing installation only. It is recommended to apply a sealant on the marble upon installation.</p>

PARISI

