

TECHNICAL DATA SHEET

VALSIR® FLUSHING SYSTEMS

WINNER S AUSTRALIA



valsir®
QUALITY FOR PLUMBING

WINNERS

IN-WALL S120 - H800

AU

Charateristics

Thickness:	120 mm
Actuations:	Mechanic
	Pneumatic
Flush volumes:	6/3, 4.5/3, 4/2 l
Push plates standard dimension:	215 x 145 mm
Valsir Design push plate dimension:	MEDIUM
WC connection:	Floor pan
Suitable for:	Brick wall, dry walls
Noise level:	17 dB(A)
Outlet valve elastomeric material:	Red Silicone
Max. temperature water supply:	25°C
Range pressure in continuous using:	50 - 500 KPa
Type of supply water:	Drinking water



Declaration of warranty

Installation is subject to the requirements of the applicable regulatory authority, the National Construction Code Volume Three - Plumbing Code of Australia, associated reference standards as applicable at the time and AS 1172.2.

Note: Plumbers, please ensure a copy of the installation instructions is left with the end user for future reference.

The complete warranty conditions are included in Valsir doc L02-416.

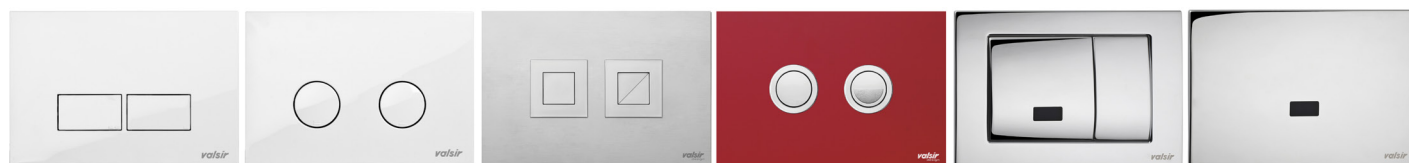
WINNERS **IN-WALL S120 - H800**

AU

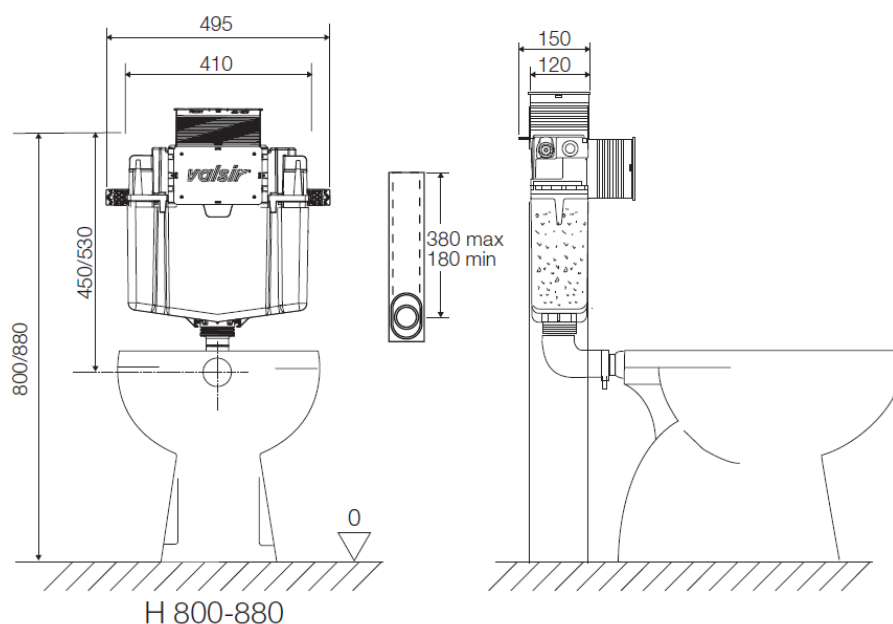
Advantages:

- The material of the shield is designed to ensure high absorption of acoustic vibrations.
- The cistern is supplied 100% pre-assembled to improve installation speed and simplicity on site.
- The rotating water connection fitting simplifies cistern installation.
- Patented by Valsir, the flush valve guarantees the cleaning of all pan types, including Rimless pans.
- The internal components of Winner S are certified according to ISO EN 3822, in silence class I both at 3 and 5 bar.
- The different plastic materials of the flush and float valve avoid the formation of limescale.
- Actuation: mechanical, pneumatic.
- All rubber components comply with EN 681/WC, a guarantee of their quality and resistance to chemical agents.
- Flush regulation with Tropea S is extremely easy and can be set at 6/3, 4.5/3 or 4/2 litres fully in accordance to water saving philosophy and Green Building requirements.

Push plates available:



Technical specs:



Approvals:

The approvals of Valsir® flushing systems are available on the website: www.valsir.com

WINNERS

IN-WALL S120 - H880

AU

Charateristics

Thickness:	120 mm
Actuations:	Mechanic
	Pneumatic
Flush volumes:	6/3, 4.5/3, 4/2 l
Push plates standard dimension:	215 x 145 mm
Valsir Design push plate dimension:	MEDIUM
WC connection:	Floor pan
Suitable for:	Brick wall, dry walls
Noise level:	17 dB(A)
Outlet valve elastomeric material:	Red Silicone
Max. temperature water supply:	25°C
Range pressure in continuous using:	50 - 500 KPa
Type of supply water:	Drinking water



Declaration of warranty

Installation is subject to the requirements of the applicable regulatory authority, the National Construction Code Volume Three - Plumbing Code of Australia, associated reference standards as applicable at the time and AS 1172.2.

Note: Plumbers, please ensure a copy of the installation instructions is left with the end user for future reference.

The complete warranty conditions are included in Valsir doc L02-416.

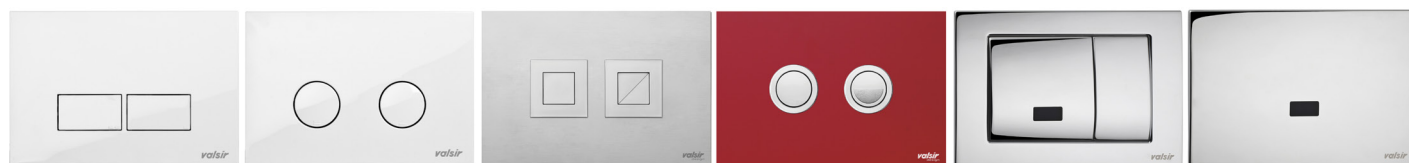
WINNERS **IN-WALL S120 - H880**

AU

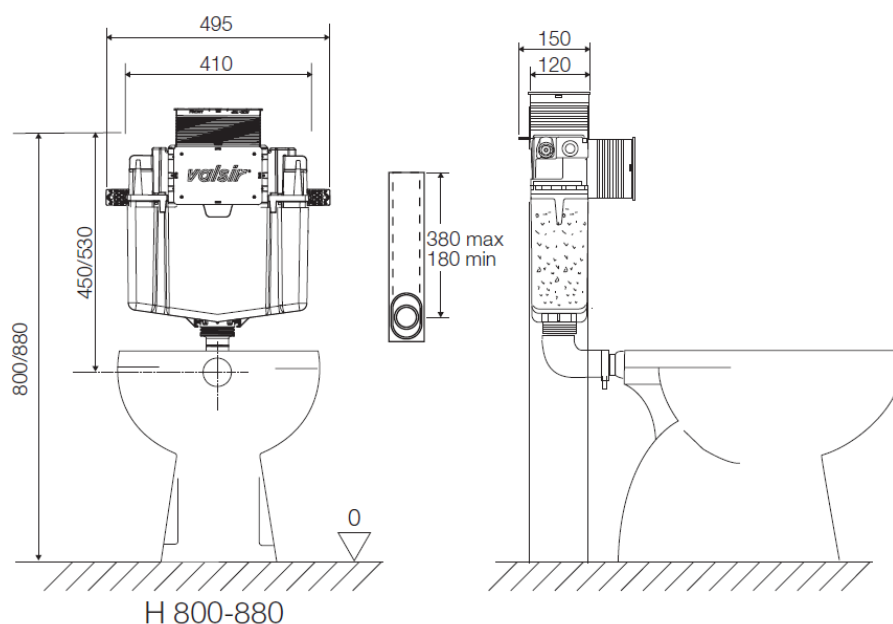
Advantages:

- The material of the shield is designed to ensure high absorption of acoustic vibrations.
- The cistern is supplied 100% pre-assembled to improve installation speed and simplicity on site.
- The rotating water connection fitting simplifies cistern installation.
- Patented by Valsir, the flush valve guarantees the cleaning of all pan types, including Rimless pans.
- The internal components of Winner S are certified according to ISO EN 3822, in silence class I both at 3 and 5 bar.
- The different plastic materials of the flush and float valve avoid the formation of limescale.
- Actuation: mechanical, pneumatic.
- All rubber components comply with EN 681/WC, a guarantee of their quality and resistance to chemical agents.
- Flush regulation with Tropea S is extremely easy and can be set at 6/3, 4.5/3 or 4/2 litres fully in accordance to water saving philosophy and Green Building requirements.

Push plates available:



Technical specs:



Approvals:

The approvals of Valsir® flushing systems are available on the website: www.valsir.com

WINNERS

IN-WALL S120 - H1140

AU

Charateristics

Thickness:	120 mm
Actuations:	Mechanic
	Pneumatic
Flush volumes:	6/3, 4.5/3, 4/2 l
Push plates standard dimension:	215 x 145 mm
Valsir Design push plate dimension:	MEDIUM
WC connection:	Floor pan
Suitable for:	Brick wall, dry walls
Noise level:	17 dB(A)
Outlet valve elastomeric material:	Red Silicone
Max. temperature water supply:	25°C
Range pressure in continuous using:	50 - 500 KPa
Type of supply water:	Drinking water



Declaration of warranty

Installation is subject to the requirements of the applicable regulatory authority, the National Construction Code Volume Three - Plumbing Code of Australia, associated reference standards as applicable at the time and AS 1172.2.

Note: Plumbers, please ensure a copy of the installation instructions is left with the end user for future reference.

The complete warranty conditions are included in Valsir doc L02-416.

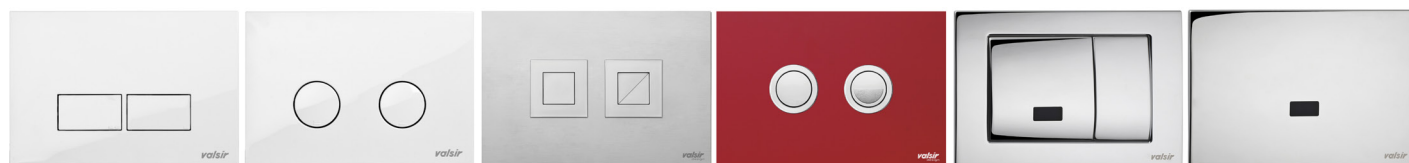
WINNERS **IN-WALL S120 - H1140**

AU

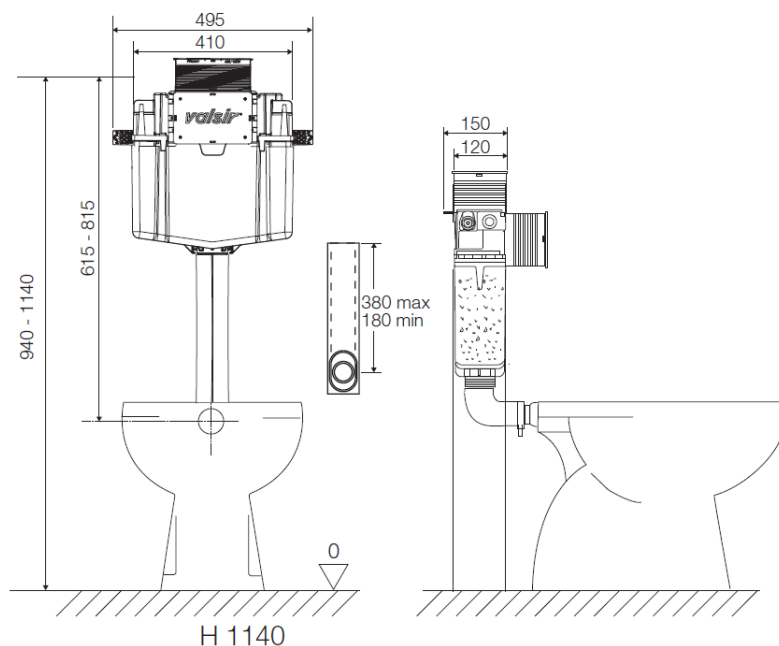
Advantages:

- The material of the shield is designed to ensure high absorption of acoustic vibrations.
- The cistern is supplied 100% pre-assembled to improve installation speed and simplicity on site.
- The rotating water connection fitting simplifies cistern installation.
- Patented by Valsir, the flush valve guarantees the cleaning of all pan types, including Rimless pans.
- The internal components of Winner S are certified according to ISO EN 3822, in silence class I both at 3 and 5 bar.
- The different plastic materials of the flush and float valve avoid the formation of limescale.
- Actuation: mechanical, pneumatic.
- All rubber components comply with EN 681/WC, a guarantee of their quality and resistance to chemical agents.
- Flush regulation with Tropea S is extremely easy and can be set at 6/3, 4.5/3 or 4/2 litres fully in accordance to water saving philosophy and Green Building requirements.

Push plates available:



Technical specs:



Approvals:

The approvals of Valsir® flushing systems are available on the website: www.valsir.com

WINNERS

BLOCK S120 - H800

AU

Charateristics

Thickness:	120 mm
Actuations:	Mechanic
	Pneumatic
Flush volumes:	6/3, 4.5/3, 4/2 l
Push plates standard dimension:	215 x 145 mm
Valsir Design push plate dimension:	MEDIUM
WC connection:	Wall hung pan
Suitable for:	Dry walls
Load resistance:	In compliance with AS 1172.1
Wall fixing kit:	Included
Noise level:	17 dB(A)
Outlet valve elastomeric material:	Red Silicone
Max. temperature water supply:	25°C
Range pressure in continuous using:	50 - 500 KPa
Type of supply water:	Drinking water



Declaration of warranty

Installation is subject to the requirements of the applicable regulatory authority, the National Construction Code Volume Three - Plumbing Code of Australia, associated reference standards as applicable at the time and AS 1172.2.

Note: Plumbers, please ensure a copy of the installation instructions is left with the end user for future reference.

The complete warranty conditions are included in Valsir doc L02-416.

WINNERS

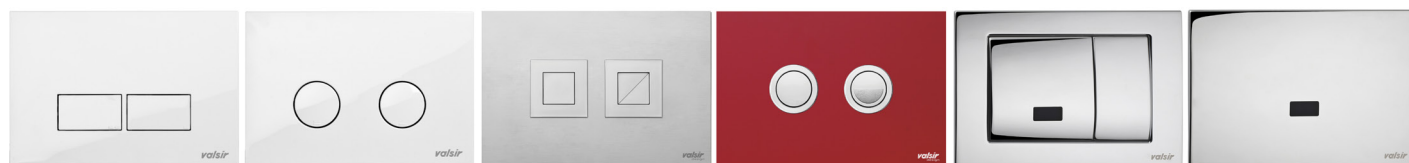
BLOCK S120 - H800

AU

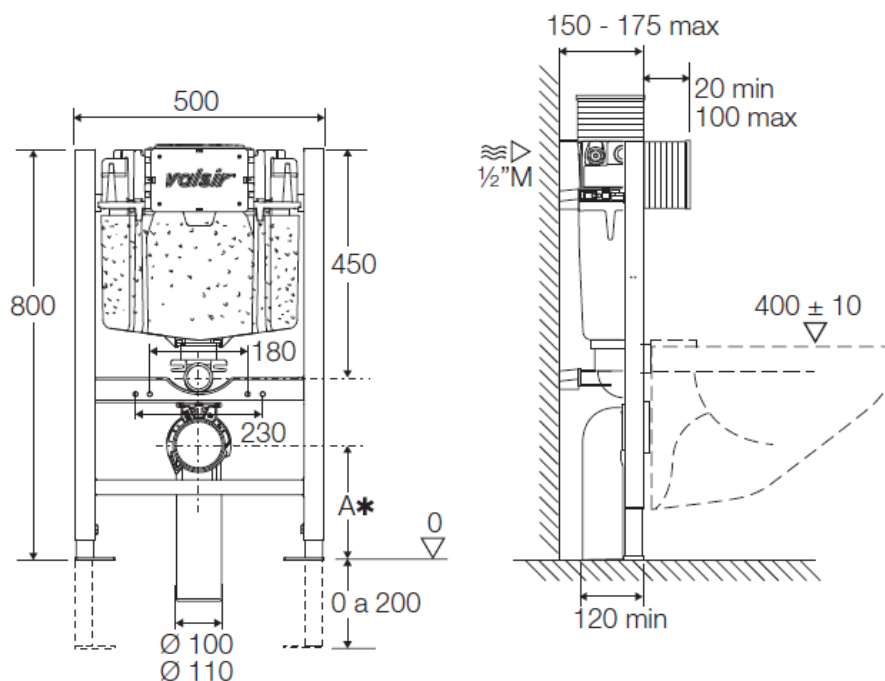
Advantages:

- The material of the shield is designed to ensure high absorption of acoustic vibrations.
- The cistern is supplied 100% pre-assembled to improve installation speed and simplicity on site.
- The rotating water connection fitting simplifies cistern installation.
- Patented by Valsir, the flush valve guarantees the cleaning of all pan types, including Rimless pans.
- The internal components of Winner S are certified according to ISO EN 3822, in silence class I both at 3 and 5 bar.
- The different plastic materials of the flush and float valve avoid the formation of limescale.
- Actuation: mechanical, pneumatic.
- All rubber components comply with EN 681/WC, a guarantee of their quality and resistance to chemical agents.
- Flush regulation with Tropea S is extremely easy and can be set at 6/3, 4.5/3 or 4/2 litres fully in accordance to water saving philosophy and Green Building requirements.

Push plates available:



Technical specs:



Approvals:

The approvals of Valsir® flushing systems are available on the website: www.valsir.com

WINNERS

BLOCK S120 - H880

AU

Charateristics

Thickness:	120 mm
Actuations:	Mechanic
	Pneumatic
Flush volumes:	6/3, 4.5/3, 4/2 l
Push plates standard dimension:	215 x 145 mm
Valsir Design push plate dimension:	MEDIUM
WC connection:	Wall hung pan
Suitable for:	Dry walls
Load resistance:	In compliance with AS 1172.1
Wall fixing kit:	Included
Noise level:	17 dB(A)
Outlet valve elastomeric material:	Red Silicone
Max. temperature water supply:	25°C
Range pressure in continuous using:	50 - 500 KPa
Type of supply water:	Drinking water



Declaration of warranty

Installation is subject to the requirements of the applicable regulatory authority, the National Construction Code Volume Three - Plumbing Code of Australia, associated reference standards as applicable at the time and AS 1172.2.

Note: Plumbers, please ensure a copy of the installation instructions is left with the end user for future reference.

The complete warranty conditions are included in Valsir doc L02-416.

WINNERS

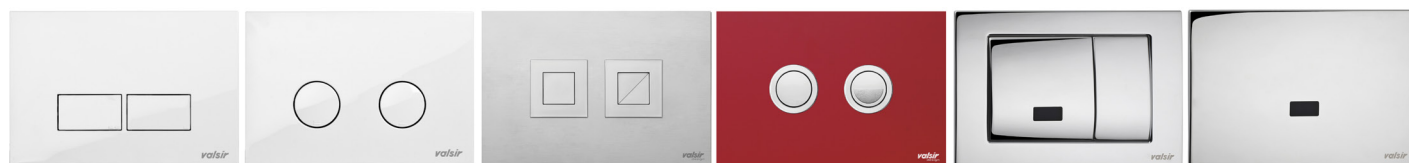
BLOCK S120 - H880

AU

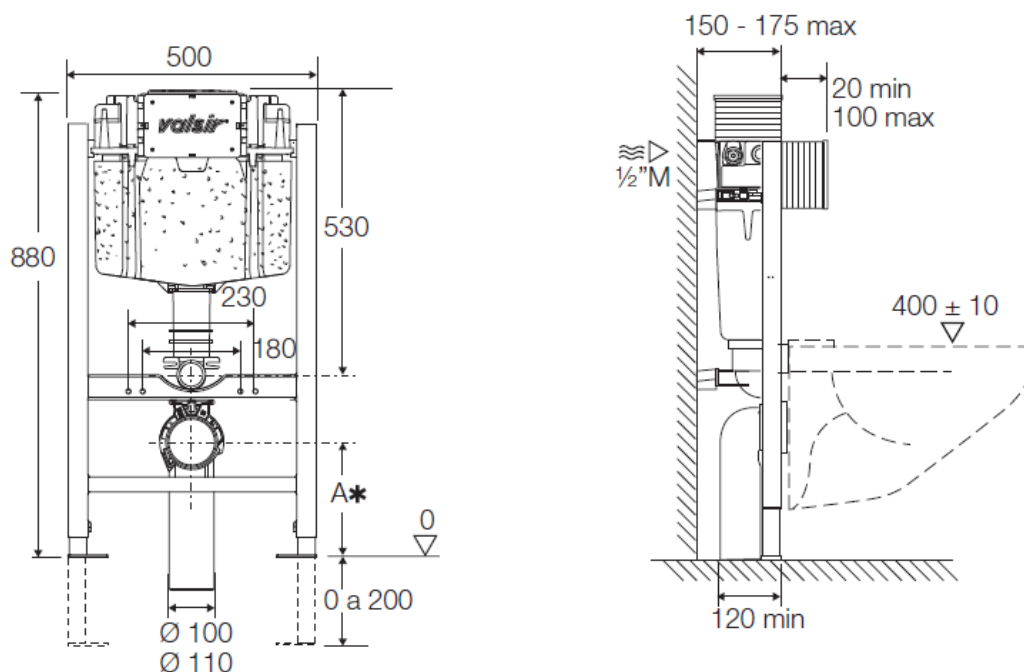
Advantages:

- The material of the shield is designed to ensure high absorption of acoustic vibrations.
- The cistern is supplied 100% pre-assembled to improve installation speed and simplicity on site.
- The rotating water connection fitting simplifies cistern installation.
- Patented by Valsir, the flush valve guarantees the cleaning of all pan types, including Rimless pans.
- The internal components of Winner S are certified according to ISO EN 3822, in silence class I both at 3 and 5 bar.
- The different plastic materials of the flush and float valve avoid the formation of limescale.
- Actuation: mechanical, pneumatic.
- All rubber components comply with EN 681/WC, a guarantee of their quality and resistance to chemical agents.
- Flush regulation with Tropea S is extremely easy and can be set at 6/3, 4.5/3 or 4/2 litres fully in accordance to water saving philosophy and Green Building requirements.

Push plates available:



Technical specs:



Approvals:

The approvals of Valsir® flushing systems are available on the website: www.valsir.com

WINNERS

BLOCK S120 - H1140

AU

Charateristics

Thickness:	120 mm
Actuations:	Mechanic
	Pneumatic
Flush volumes:	6/3, 4.5/3, 4/2 l
Push plates standard dimension:	215 x 145 mm
Valsir Design push plate dimension:	MEDIUM
WC connection:	Wall hung pan
Suitable for:	Dry walls
Load resistance:	In compliance with AS 1172.1
Wall fixing kit:	Included
Noise level:	17 dB(A)
Outlet valve elastomeric material:	Red Silicone
Max. temperature water supply:	25°C
Range pressure in continuous using:	50 - 500 KPa
Type of supply water:	Drinking water



Declaration of warranty

Installation is subject to the requirements of the applicable regulatory authority, the National Construction Code Volume Three - Plumbing Code of Australia, associated reference standards as applicable at the time and AS 1172.2.

Note: Plumbers, please ensure a copy of the installation instructions is left with the end user for future reference.

The complete warranty conditions are included in Valsir doc L02-416.

WINNER S

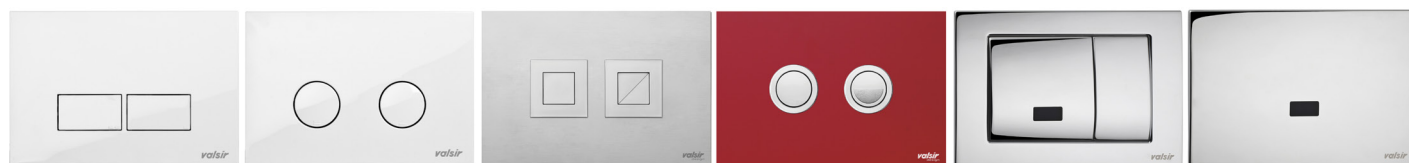
BLOCK S120 - H1140

AU

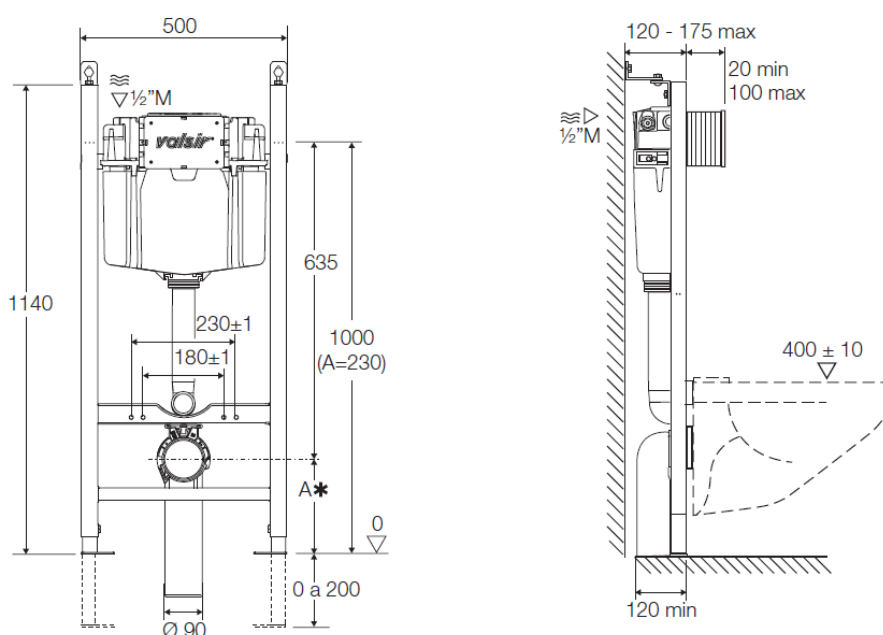
Advantages:

- The material of the shield is designed to ensure high absorption of acoustic vibrations.
- The cistern is supplied 100% pre-assembled to improve installation speed and simplicity on site.
- The rotating water connection fitting simplifies cistern installation.
- Patented by Valsir, the flush valve guarantees the cleaning of all pan types, including Rimless pans.
- The internal components of Winner S are certified according to ISO EN 3822, in silence class I both at 3 and 5 bar.
- The different plastic materials of the flush and float valve avoid the formation of limescale.
- Actuation: mechanical, pneumatic.
- All rubber components comply with EN 681/WC, a guarantee of their quality and resistance to chemical agents.
- Flush regulation with Tropea S is extremely easy and can be set at 6/3, 4.5/3 or 4/2 litres fully in accordance to water saving philosophy and Green Building requirements.

Push plates available:



Technical specs:



Approvals:

The approvals of Valsir® flushing systems are available on the website: www.valsir.com

Charateristics

Minimum thickness:	120 mm
Actuations:	Mechanic
	Pneumatic
Flush volumes:	6/3, 4.5/3, 4/2 l
Push plates standard dimension:	215 x 145 mm
Valsir Design push plate dimension:	MEDIUM
WC connection:	Wall hung pan
Suitable for:	Dry walls
Load resistance:	In compliance with AS 1172.1
Noise level:	17 dB(A)
Outlet valve elastomeric material:	Red Silicone
Max. temperature water supply:	25°C
Range pressure in continuous using:	50 - 500 KPa
Type of supply water:	Drinking water



Declaration of warranty

Installation is subject to the requirements of the applicable regulatory authority, the National Construction Code Volume Three - Plumbing Code of Australia, associated reference standards as applicable at the time and AS 1172.2.

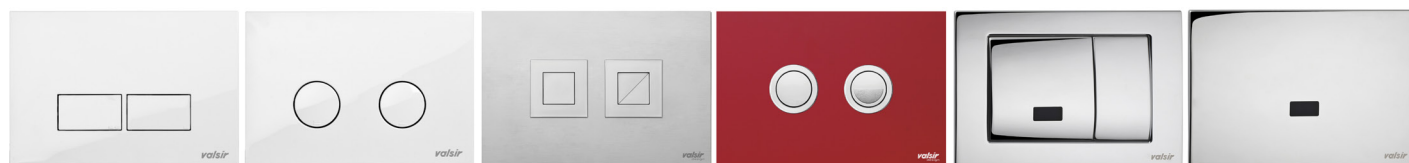
Note: Plumbers, please ensure a copy of the installation instructions is left with the end user for future reference.

The complete warranty conditions are included in Valsir doc L02-416.

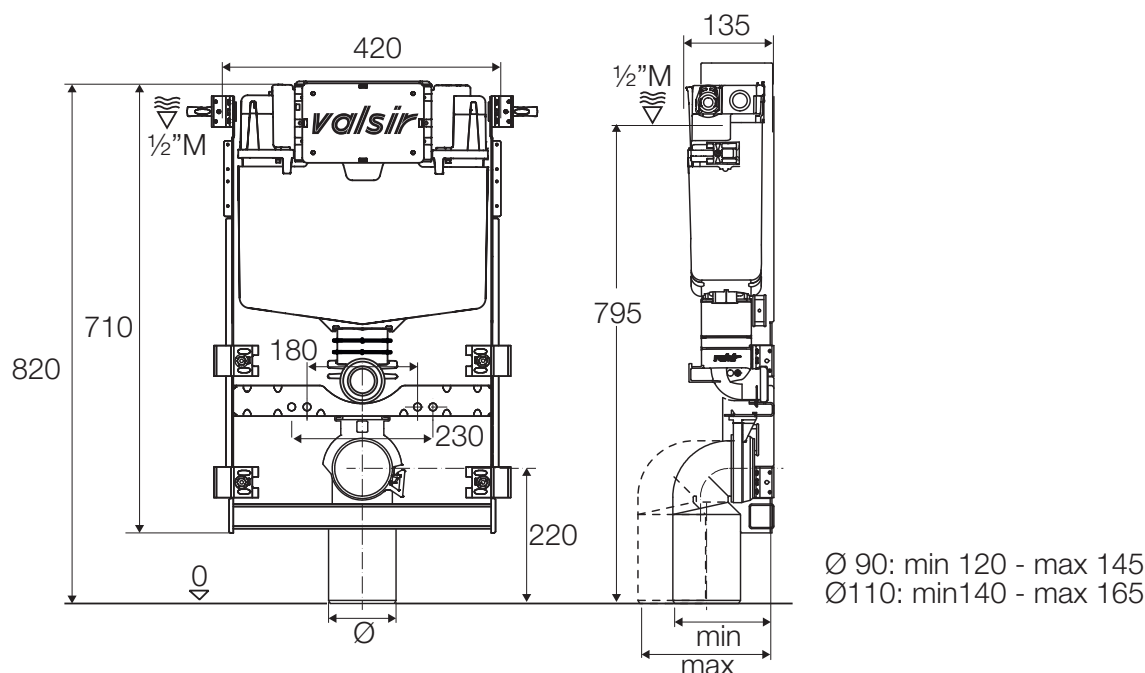
Advantages:

- The material of the shield is designed to ensure high absorption of acoustic vibrations.
- The cistern is supplied 100% pre-assembled to improve installation speed and simplicity on site.
- The rotating water connection fitting simplifies cistern installation.
- Patented by Valsir, the flush valve guarantees the cleaning of all pan types, including Rimless pans.
- The internal components of Winner S are certified according to ISO EN 3822, in silence class I both at 3 and 5 bar.
- The different plastic materials of the flush and float valve avoid the formation of limescale.
- Actuation: mechanical, pneumatic.
- All rubber components comply with EN 681/WC, a guarantee of their quality and resistance to chemical agents.
- Flush regulation with Tropea S is extremely easy and can be set at 6/3, 4.5/3 or 4/2 litres fully in accordance to water saving philosophy and Green Building requirements.

Push plates available:



Technical specs:



Approvals:

The approvals of Valsir® flushing systems are available on the website: www.valsir.com

Charateristics

Minimum thickness:	120 mm
Actuations:	Mechanic
	Pneumatic
Flush volumes:	6/3, 4.5/3, 4/2 l
Push plates standard dimension:	215 x 145 mm
Valsir Design push plate dimension:	MEDIUM
WC connection:	Wall hung pan
Suitable for:	Dry walls
Load resistance:	In compliance with AS 1172.1
Noise level:	17 dB(A)
Outlet valve elastomeric material:	Red Silicone
Max. temperature water supply:	25°C
Range pressure in continuous using:	50 - 500 KPa
Type of supply water:	Drinking water



Declaration of warranty

Installation is subject to the requirements of the applicable regulatory authority, the National Construction Code Volume Three - Plumbing Code of Australia, associated reference standards as applicable at the time and AS 1172.2.

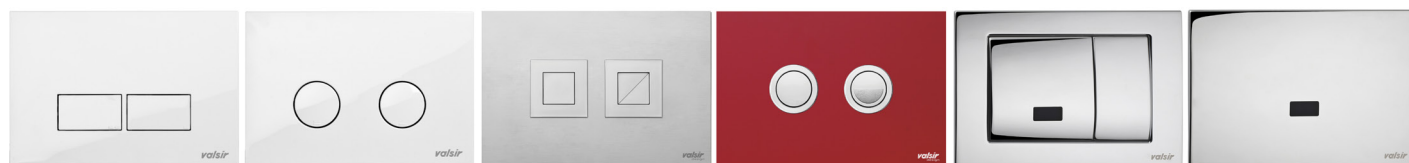
Note: Plumbers, please ensure a copy of the installation instructions is left with the end user for future reference.

The complete warranty conditions are included in Valsir doc L02-416.

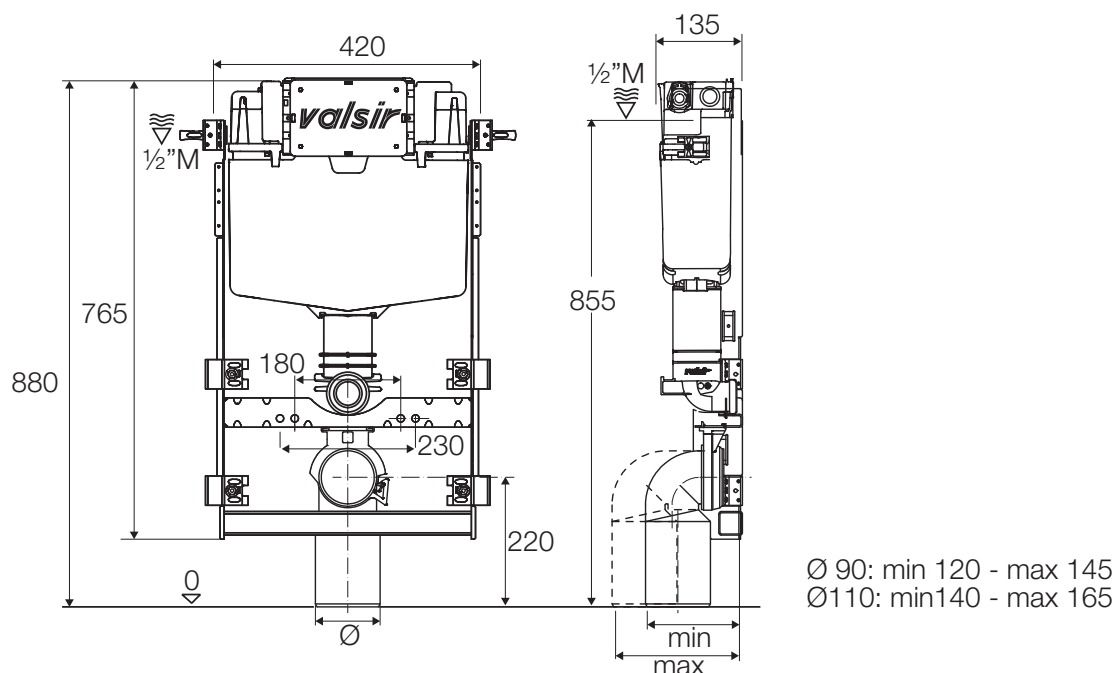
Advantages:

- The material of the shield is designed to ensure high absorption of acoustic vibrations.
- The cistern is supplied 100% pre-assembled to improve installation speed and simplicity on site.
- The rotating water connection fitting simplifies cistern installation.
- Patented by Valsir, the flush valve guarantees the cleaning of all pan types, including Rimless pans.
- The internal components of Winner S are certified according to ISO EN 3822, in silence class I both at 3 and 5 bar.
- The different plastic materials of the flush and float valve avoid the formation of limescale.
- Actuation: mechanical, pneumatic.
- All rubber components comply with EN 681/WC, a guarantee of their quality and resistance to chemical agents.
- Flush regulation with Tropea S is extremely easy and can be set at 6/3, 4.5/3 or 4/2 litres fully in accordance to water saving philosophy and Green Building requirements.

Push plates available:



Technical specs:



Approvals:

The approvals of Valsir® flushing systems are available on the website: www.valsir.com

Charateristics

Minimum thickness:	120 mm
Actuations:	Mechanic
	Pneumatic
Flush volumes:	6/3, 4.5/3, 4/2 l
Push plates standard dimension:	215 x 145 mm
Valsir Design push plate dimension:	MEDIUM
WC connection:	Wall hung pan
Suitable for:	Dry walls
Load resistance:	In compliance with AS 1172.1
Noise level:	17 dB(A)
Outlet valve elastomeric material:	Red Silicone
Max. temperature water supply:	25°C
Range pressure in continuous using:	50 - 500 KPa
Type of supply water:	Drinking water



Declaration of warranty

Installation is subject to the requirements of the applicable regulatory authority, the National Construction Code Volume Three - Plumbing Code of Australia, associated reference standards as applicable at the time and AS 1172.2.

Note: Plumbers, please ensure a copy of the installation instructions is left with the end user for future reference.

The complete warranty conditions are included in Valsir doc L02-416.

- The material of the shield is designed to ensure high absorption of acoustic vibrations.
- The cistern is supplied 100% pre-assembled to improve installation speed and simplicity on site.
- The rotating water connection fitting simplifies cistern installation.
- Patented by Valsir, the flush valve guarantees the cleaning of all pan types, including Rimless pans.
- The internal components of Winner S are certified according to ISO EN 3822, in silence class I both at 3 and 5 bar.
- The different plastic materials of the flush and float valve avoid the formation of limescale.
- Actuation: mechanical, pneumatic.
- All rubber components comply with EN 681/WC, a guarantee of their quality and resistance to chemical agents.
- Flush regulation with Tropea S is extremely easy and can be set at 6/3, 4.5/3 or 4/2 litres fully in accordance to water saving philosophy and Green Building requirements.

Technical drawing of the Valsir 1000 boiler, showing front and side views with dimensions.

Front View Dimensions:

- Overall width: 420
- Top width (excluding mounting): 1/2" M
- Overall height: 940
- Height from base to top of boiler body: 1000
- Height from base to bottom of boiler body: 230
- Width of boiler body: 230
- Width of boiler body (excluding mounting): 180
- Base diameter: Ø

Side View Dimensions:

- Overall height: 1025
- Top width (excluding mounting): 135
- Top width (excluding mounting): 1/2" M
- Base diameter: Ø 90: min 120 - max 145
Ø 110: min 140 - max 165

The approvals of Valsir® flushing systems are available on the website: www.valsir.com

PLUMBING

WASTE SYSTEMS



SUPPLY SYSTEMS



GAS SYSTEMS



FLUSH SYSTEMS



BATHROOM SYSTEMS



TRAPS



RADIANT SYSTEMS



DRAINAGE SYSTEMS



HRV SYSTEM



ACADEMY



SEWER SYSTEMS



WATER TREATMENT



BUILDING

valsir[®]
QUALITY FOR PLUMBING

VALSIR S.p.A.
Località Merlaro, 2
25078 Vestone (BS) - Italy
Tel. +39 0365 877.011
Fax +39 0365 81.268
e-mail: valsir@valsir.it

www.valsir.com

Soggetta all'attività di direzione e coordinamento ex art. 2497 bis C.C. da parte di Silmar Group S.p.A. - Codice Fiscale 02075160172