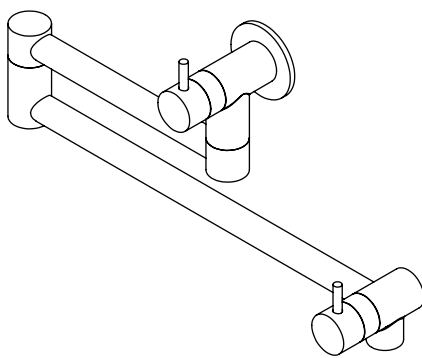
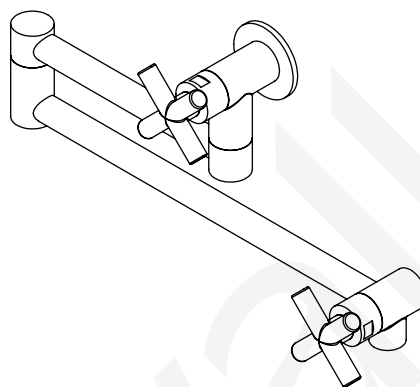
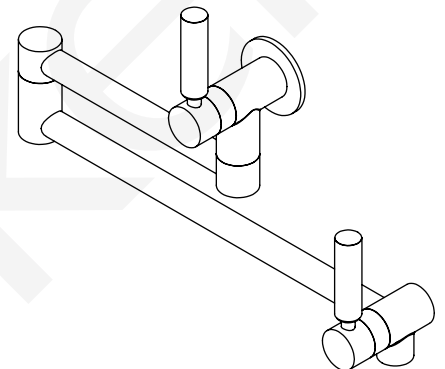
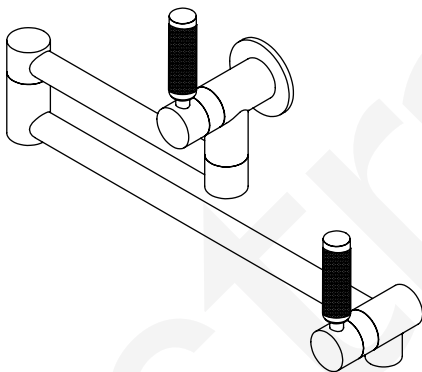
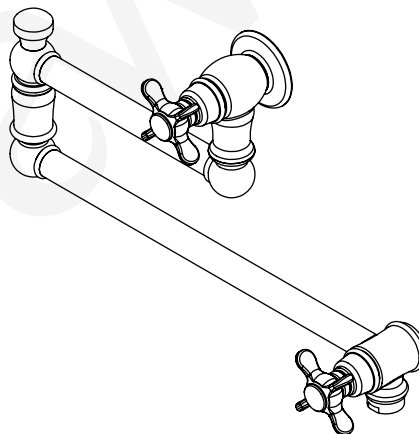


POT FILLER

- Tapware to be installed by a licenced plumber in accordance with AS/NZS 3500:2021
- Recommended working water pressure 150 - 500kPa
- Maximum water temperature is 65 deg C
- After completing the installation check function of tapware and ensure no water leaks.

INSTALLATION TO SUIT

**A69.26****A67.26****A67.26.LH****A68.26.KN****A50.26**

Prior to installation, rough in plumbing must be completed.

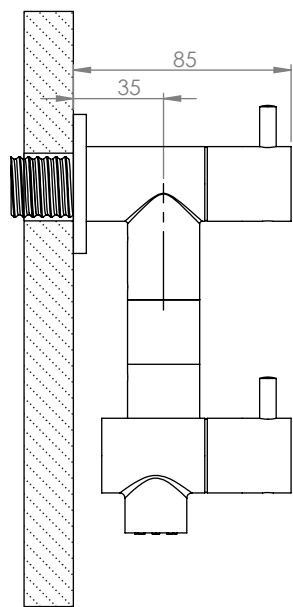
The position of your pot filler should be considered prior to starting. Please allow adequate clearance for larger cooking pots and ensure the length of the pot filler when fully extended reaches the furthest cooking position for filling.

POT FILLER

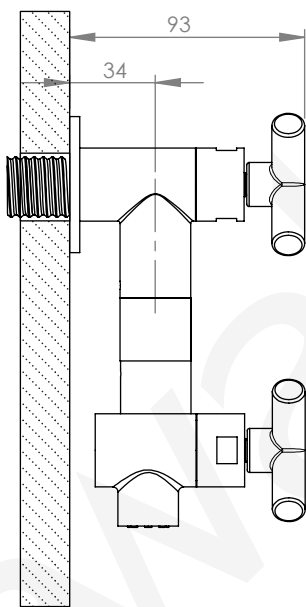
The pot filler comes pre-assembled. Secure pot filler onto 1/2" Male BSP [this requires minimum 150mm clearance from the 1/2" Male BSP]

Important: Do not disassemble the pot filler during installation. Disassembling the pot filler will void the warranty. Please follow the instructions carefully to ensure proper installation.

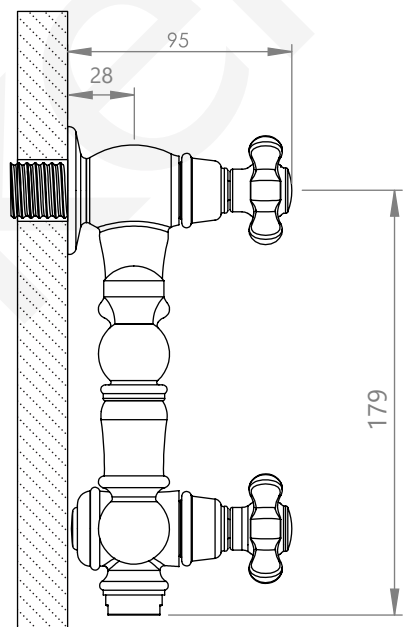
G 1/2" MALE BSP
REQUIRED IN WALL



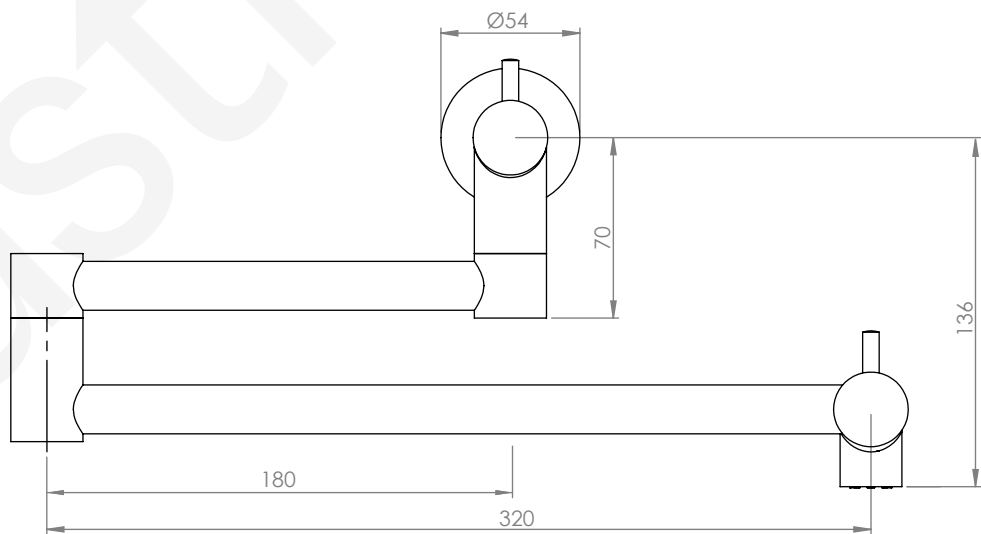
A69.26
A67.26.LH
A68.26.KN



A67.26



A50.26



NOTE: 534mm OVERALL REACH FROM WALL