

SF240-CH

Double-life* Shower Filter Systems



MAINS WATER

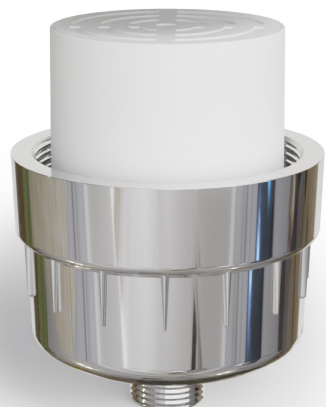


**Shower head (pictured) not included. Speak to our Customer Care Team if using a hand-held shower head.

Kit Includes:

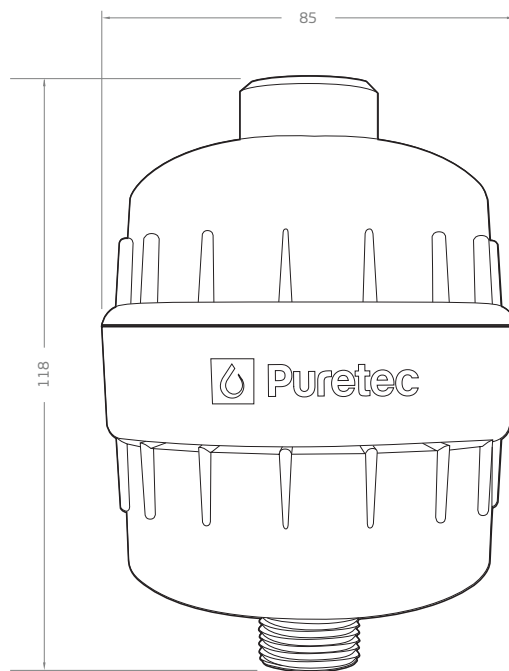


SF240-CH



Filter Cartridge

Shower Filter Housing



Note: All dimensions are in mm.

Specifications

Model Number	Replacement Cartridge	Min/Max Temperature:	Min/Max Pressure (kPa)^	Connection
SF240-CH	SF24-2	2-50	138-550	1/2" F x 1/2" M

Important Note: Use only genuine Puretec replacement cartridge. Protect from freezing.

FILTRATION TECHNOLOGY

MEDIA	PROCESS
Carbon	Highly effective at eliminating odours and chemicals
KDF (Kinetic Degradation Fluxion)	High purity copper-zinc granules that reduce contaminants in water using an oxidation/reduction



Together the Carbon and KDF media reduces sediment, chlorine, iron, lead, mercury, calcium carbonate, magnesium and chromium in your shower water.

DIRECTIONS

1.	Remove existing shower head from shower arm.
2.	Insert 1 of the seals provided into the shower filter thread, then thread the shower filter onto the shower arm.
3.	Add the second seal, and thread the shower head onto the shower filter.
4.	Flush after installation for 5 minutes.

Note: For best results change cartridge every 6 months.

Warning: Please visit www.puretec.com.au/instructions to observe essential manufacturer's instructions before use. **Note:** No claims can be made based on the specifications and images in this document. The design, technology, colours, features and prices are subject to change. This document and all its contents are copyright protected. All rights are reserved, particularly alteration, translation and reproduction using electronic systems. This spec sheet has been designed to help make product selection easy. However due to the complex nature of water chemistry, we strongly encourage confirming any product selection with one of our team. We may need to perform a water analysis test to confirm contaminants in water. **Caution:** Do not use with microbiologically unsafe water or water of unknown quality without adequate disinfection before or after the system. Our Water Filtration Specialists can provide you with advice to suit your needs. ^Where line pressure exceeds 520kPa, an approved pressure limiting device must be installed to comply with Australian & New Zealand Plumbing Standards. (Ref. AS 35001:2021, Clause 3.3.4). Maximum flow depends on cartridges, vessel, pressure, impurities etc. *The term 'eliminate' indicates significant reduction, not necessarily 100% removal. *Double-life - filter should be flipped after three months, to maximise the life of the filter.

OCT 2024

For more information contact your local stockist or visit us at puretecgroupp.com
Australia **1300 140 140** | New Zealand **0800 130 140**



Puretec
PERFECTING WATER