

**AXOR Citterio E**  
**Single lever bath mixer for concealed installation**  
 Surfaces: **Chrome** Article Number: **36455003**



## Description

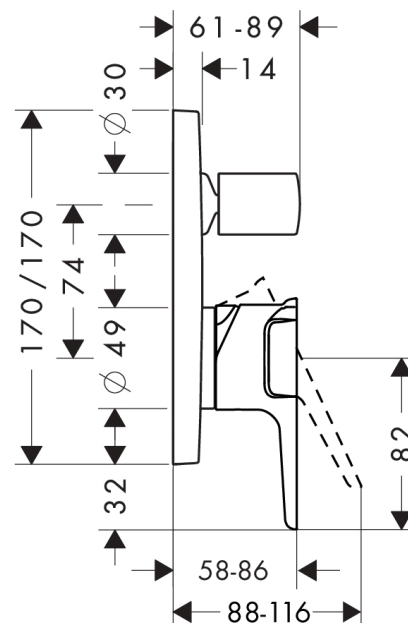
### product features

- connection type: basic set
- ceramic cartridge
- min. operating pressure: 1 bar
- max. operating pressure: 10 bar
- temperature limitation adjustable
- with automatic resetting
- with silencer
- suitable for continuous flow water heaters

## Product image



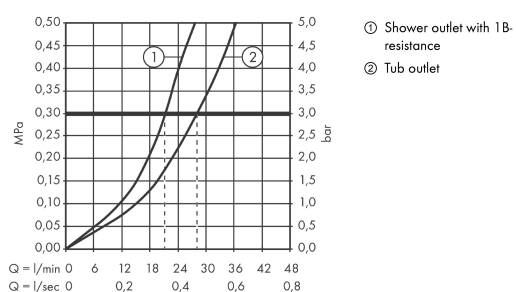
## Scale drawing



**AXOR Citterio E**  
**Single lever bath mixer for concealed installation**  
 Surfaces: **Chrome**    Article Number: **36455003**



## Flowchart

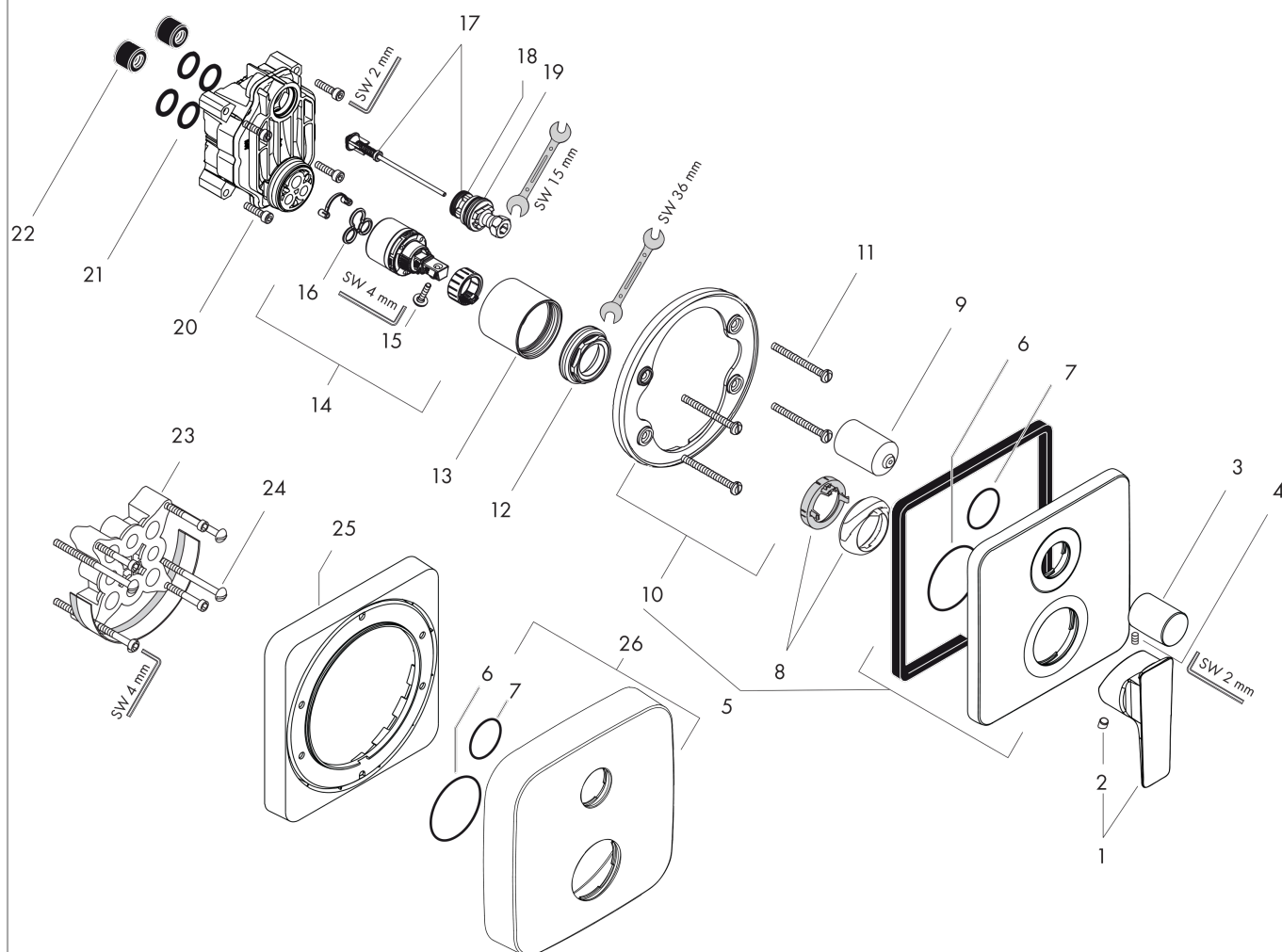


**AXOR Citterio E**  
**Single lever bath mixer for concealed installation**  
 Surfaces: **Chrome**    Article Number: **36455003**



## Exploded Drawing

Year of production: >01/19



**AXOR Citterio E**  
**Single lever bath mixer for concealed installation**  
 Surfaces: **Chrome**    Article Number: **36455003**



## Spare part list

Year of production: >01/19

Pos.	Description	Article Number	PC	PU
1	handle	92932000	0	1
2	screw cover	96338000	0	1
3	diverter knob	96473000	0	1
4	hollow set screw M4x10	97667000	0	1
5	escutcheon	98969000	0	1
6	O-Ring 48x3	95508000	0	1
7	O-ring 29x3	98371000	0	1
8	flange (Rotating Protector)	96395000	0	1
9	sleeve	96448000	0	1
10	holder for escutcheon	98793000	0	1
11	set of fixing screws	96454000	0	1
12	nut	96461000	0	1
13	sleeve	95980000	0	1
14	cartridge, assy	92730000	0	1
15	locking screw for handle	95140000	0	1
16	seal	95008000	0	1
17	selector assy	95014000	0	1
18	O-ring 16x2,3	98207000	0	1
19	O-ring 20x2,5	92602000	0	1
20	set of screws	96525000	0	1
21	O-ring 16x2	98133000	0	1
22	noise reduction	94073000	0	1
23	extension 25 mm	13595000	0	1
24	set of fixing screws	97747000	0	1
25	extension 22 mm	98860000	0	1
26	escutcheon height = 33 mm (when wall is not deep enough).	14972000	0	1
a	concealed item	01800180	0	1