

AXOR ShowerSelect
Thermostat HighFlow for concealed installation softsquare
 Finish: **Chrome** Article Number: **36711000**



product features

- 1 function
- thermostat cartridge
- flow rate upper outlet: 42 l/min
- flow rate lower outlet: 42 l/min
- maximum flow rate at 3 bar: 59 l/min
- min. operating pressure: 1 bar
- max. operating pressure: 10 bar
- Safety stop at 40 °C
- temperature limitation adjustable
- connection type: basic set

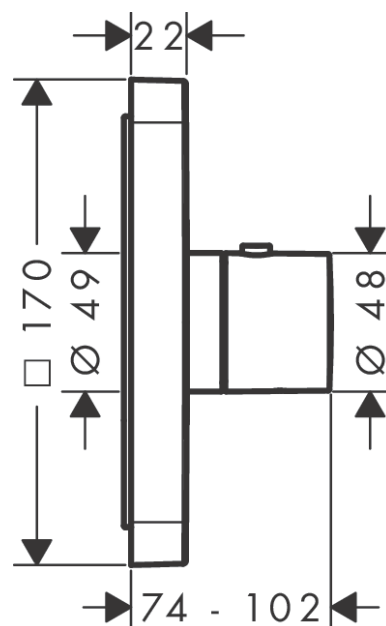
Technology



Product image



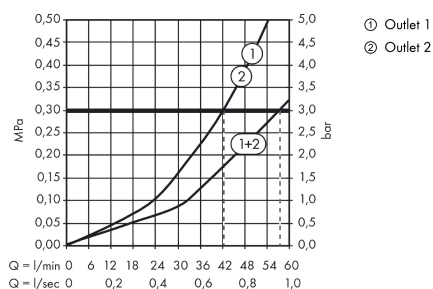
Scale drawing



AXOR ShowerSelect
Thermostat HighFlow for concealed installation softsquare
 Finish: **Chrome** Article Number: **36711000**



Flowchart

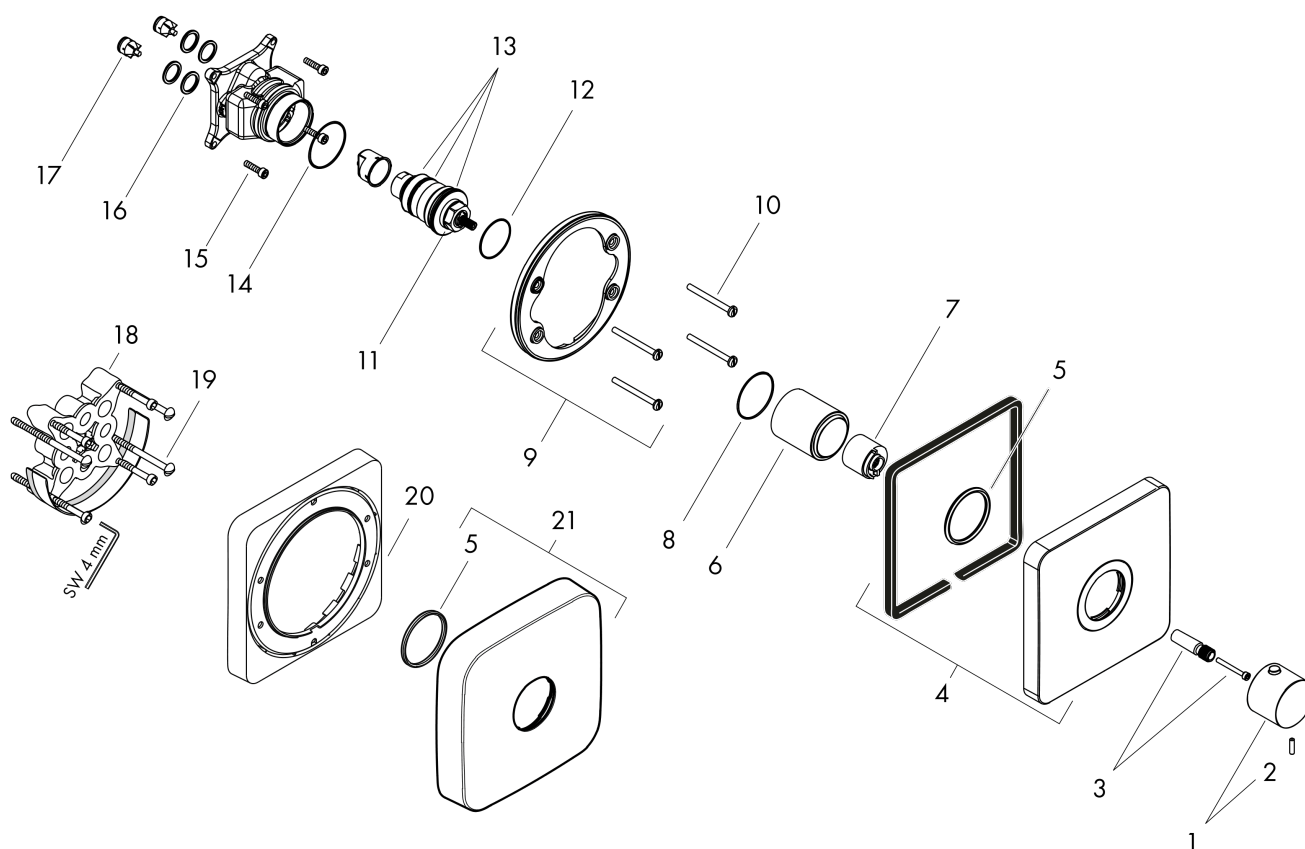


AXOR ShowerSelect
Thermostat HighFlow for concealed installation softsquare
 Finish: **Chrome** Article Number: **36711000**



Exploded Drawing

Year of production: >11/16



AXOR ShowerSelect
Thermostat HighFlow for concealed installation softsquare
 Finish: **Chrome** Article Number: **36711000**



Spare part list

Year of production: >11/16

Pos.		Article Number	PC	PU
1	handle for thermostat	92534000	13	1
2	hollow set screw M4x8	97669000	1	1
3	adapter for handle	98701000	3	1
4	escutcheon 170 / 170 mm	92535000	18	1
5	O-ring 48x4	98414000	3	1
6	sleeve	95331000	11	1
7	safety set for temperature control	97334000	4	1
8	O-ring 45x1,5	92542000	1	1
9	holder for escutcheon	98793000	9	1
10	set of fixing screws	96454000	3	1
11	thermostat cartridge	96633000	15	1
12	O-ring 35x2	92604000	2	1
13	sealing set	96636000	10	1
14	O-ring 43x1,5	98148000	1	1
15	set of screws	96525000	3	1
16	O-ring 16x2	98133000	1	1
17	set of non return valves DW 15	97350000	6	1
18	extension 25 mm	13595000	99	1
19	set of fixing screws	97747000	1	1
20	extension 22 mm	98860000	99	1
21	escutcheon height = 33 mm (when wall is not deep enough).	14971000	99	1
a	concealed item	01800180	99	1
b	adapter for exchanged connections	93181000	18	1
c	fixation set	96615000	99	1
d	Grease	90920000	5	1