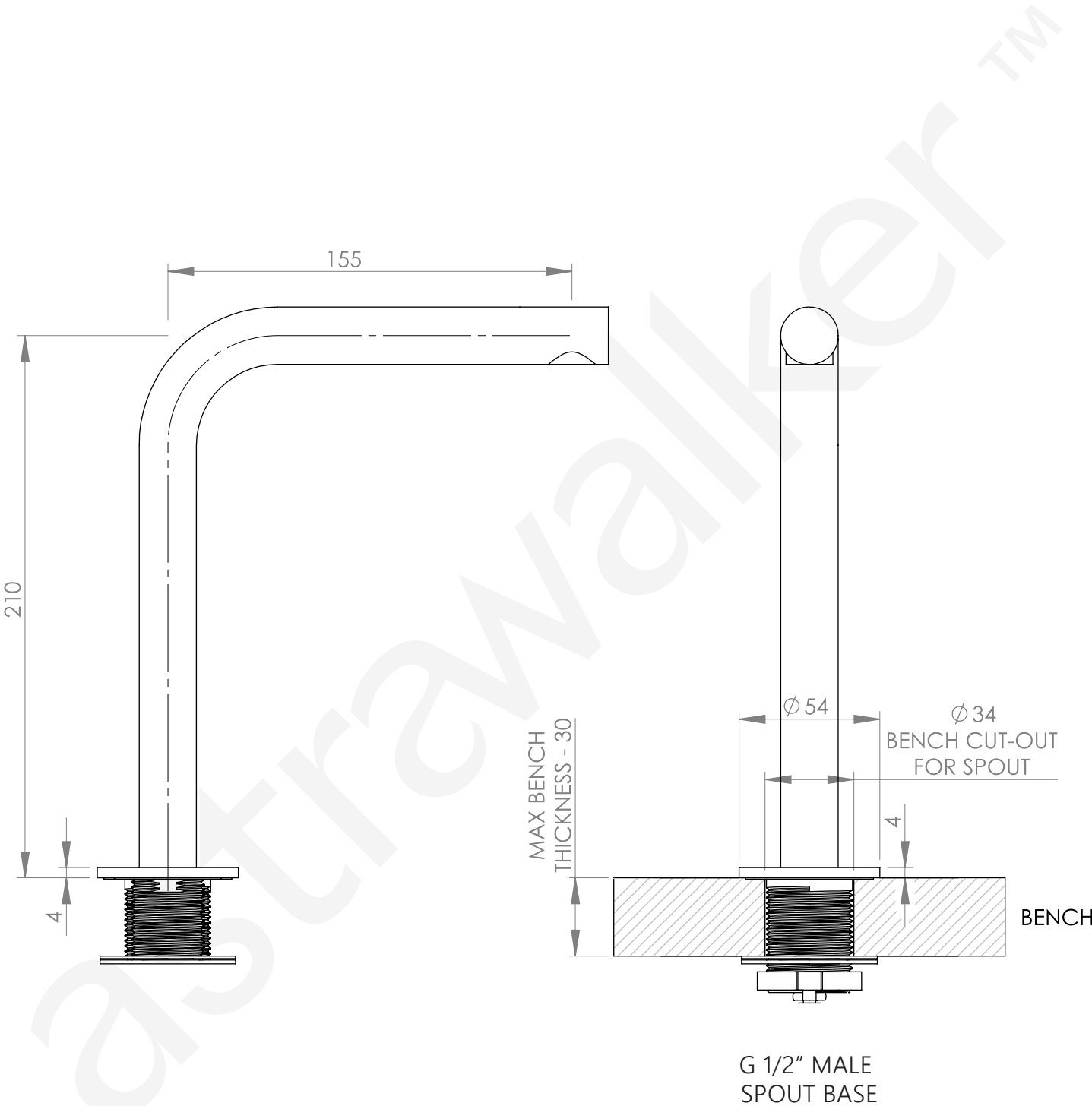
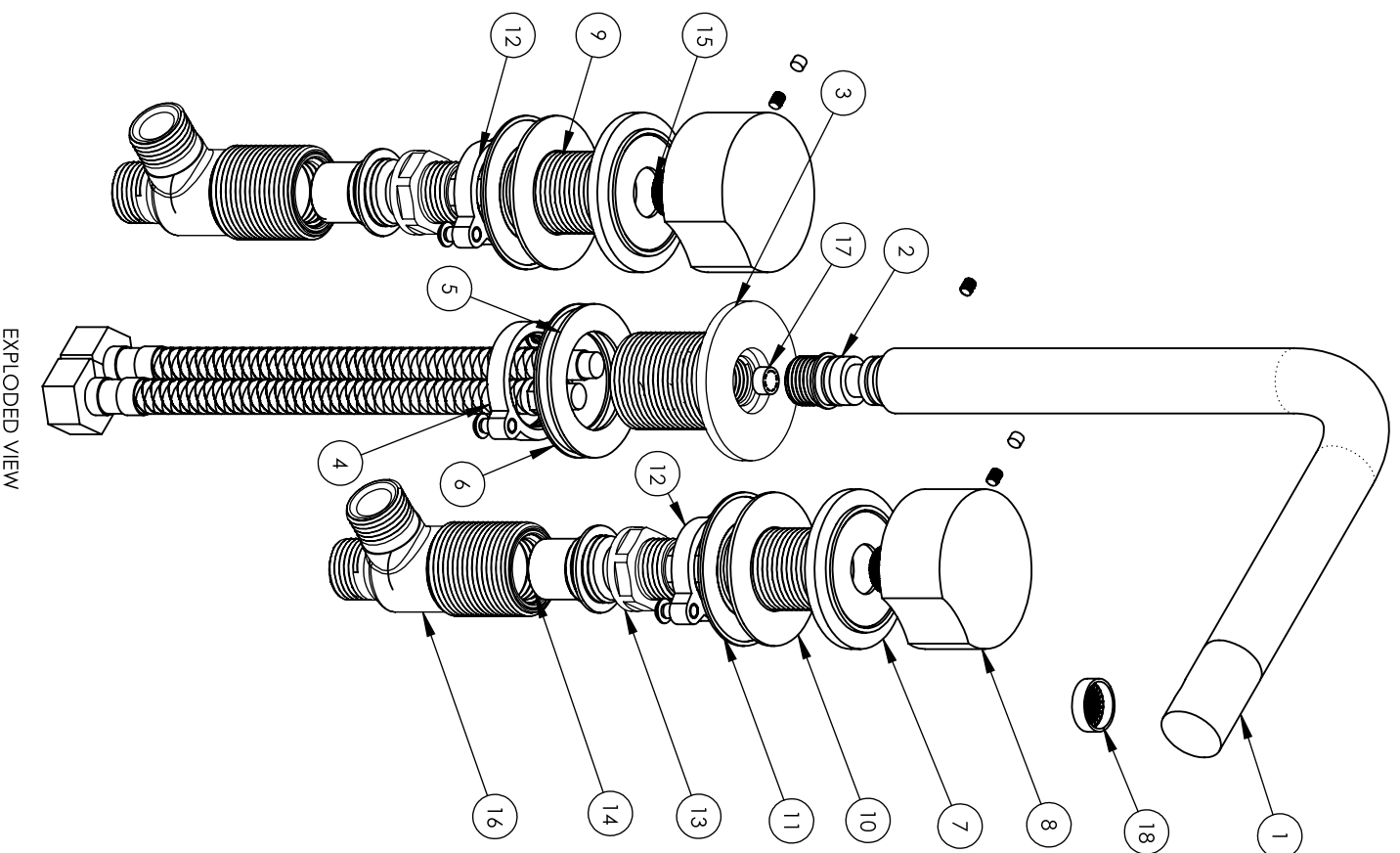




A81.00.S
BASIN SPOUT ONLY
6 STAR/3.5Lpm WELS RATING





ITEM NO.	PART NUMBER	DESCRIPTION	Material	QTY.
1	8142000-03	L-SHAPE SPOUT ASSEMBLY	BRASS TUBE	1
2	8731400-04	Ø16.4 CONNECTOR	BRASS	1
3	8142000-01	SPOUT BASE	BRASS	1
4	TT-33-1.5	Ø33 DOUBLE EAR NUT	BRASS	1
5	TP-52-33.5-1.5	RUBBER WASHER 52 x 33.5 x 1.5	NBR	1
6	TD-52-33.5-1	METAL WASHER 52 x 33.5 x 1	STAINLESS STEEL	1
7	8142000-02	HANDLE BASE	BRASS	2
8	8141450-03	HANDLE INDENT	BRASS	2
9	8142000-04	M28 SPINDLE COVER	BRASS TUBE	2
10	TP-52-28.5-1.5	RUBBER WASHER 52 x 28.5 x 1.5	NBR	2
11	TD-52-28.5-1	METAL WASHER 52 x 28.5 x 1	STAINLESS STEEL	2
12	TT-28-1.5	Ø28 DOUBLE EAR NUT	BRASS	2
13	8142000-07	LOCK NUT G1/2	BRASS	2
14	TFY-G5-8-105	SPINDLE - G5/8 105	DZR BRASS	2
15	8736201-21	SPINDLE ADAPTOR	BRASS	2
16	7782000-07	BASIN BODY	DZR BRASS	2
17	58.6508.1	FLOW CONTROL	FLOW CONTROL	1
18	01.5501.00001	AERATOR	AERATOR	1

DWG NO.		DO NOT SCALE DRAWING	
A81.00			
DESCRIPTION/TITLE		Astra Walker Pty/Ltd 215 North Rocks Rd. North Rocks, NSW, 2151 T : +61 2 8838 5100 F : +61 2 9683 3222 enquiries@astrawalker.com.au	
MATERIAL :		FINISH :	
SCALE 1 : 3	DRAWN	AA	25/01/19
	CHK'D	AS	25/01/19
	APP'VD	AS	25/01/19
		REVISION NO A	
		REVISION DATE 25/01/19	