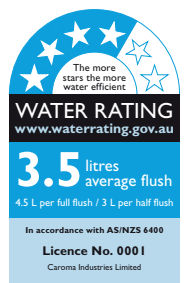


# Luna

**Vitreous China 4.5/3 litre Dual Flush  
Wall Faced Close-Coupled Toilet Suite**





A contoured design wall faced close coupled toilet suite conceals plumbing fittings for an aesthetically pleasing finish. The pan connection system includes the patented Caroma Uni-Orbital<sup>®</sup> Connector for increased installation flexibility. The Caroma Uni-Orbital<sup>®</sup> connector extends to any position in a 50mm radius, unlike traditional connectors that only move backwards and forwards. The setout range is from 60mm – 185mm with a recommended setout of 140mm. The suite is targeted to commercial projects, but is also suitable for domestic applications. Fitted with chrome plated push buttons, the smooth sided pan design has a soft close quick release seat.

**Pan:** Luna 4.5 litre full flush washdown pan with box flushing rim.

**Traps:** Patented Caroma Uni-Orbital<sup>®</sup> connector supplied for S or P-trap installations.

**Cisterns:** Caroma **Universal** cistern – has a free fitting lid and is suitable for domestic and light commercial applications. Available as internal overflow. Available in either bottom inlet or back entry options. Back entry cistern inlet stop valve is concealed within the cistern. **Vandal Resistant Conversion Kit** – A simple to install conversion kit is available for the standard mechanism to lock the lid onto the cistern, recommended for use in heavy duty commercial areas. Code No.750109.

**Important: Working pressure minimum 30kPa to maximum 1000kPa flow pressure. Rain water tank compliant. Accurate wall setout for B.S.P. 1/2" Nipple water inlet connection is essential.**

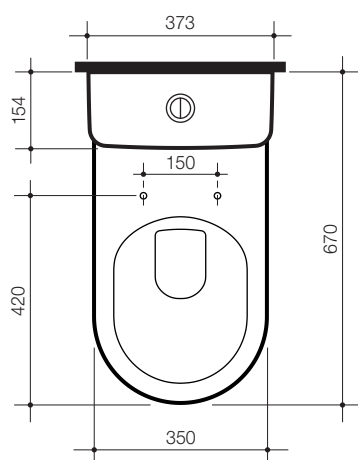
**Fixing:** The cistern is fixed directly to the pan with a robust concealed base fixing system without the need for wall fixing.

**Seats:** The **Xena** soft close quick release thermoset toilet seat is provided as standard with this suite. See chapter 5.01 SEATS of the Caroma Technical Manual for further details.

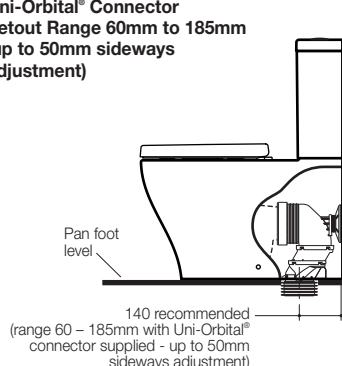
**Colours:** White only.

**Installation:** The installation of the toilet suite shall be in accordance with the normal minimum drainline grade requirements in AS/NZS 3500.2.

**Dimensions:** All dimensions are in millimetres and are subject to normal manufacturing variations. Caroma pursues a policy of continuing improvement in design and performance of its products. The right is therefore reserved to vary specifications without notice.



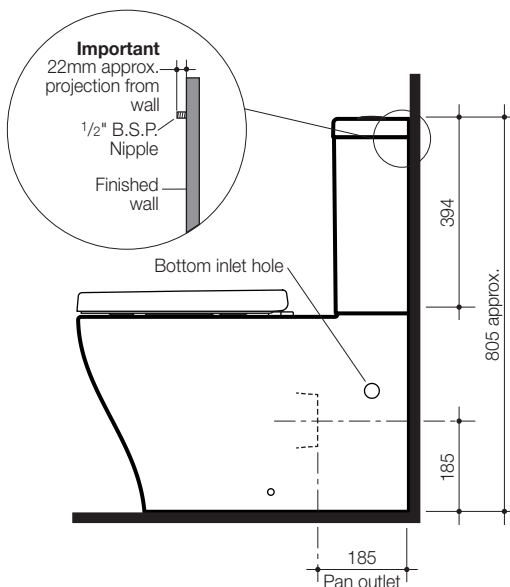
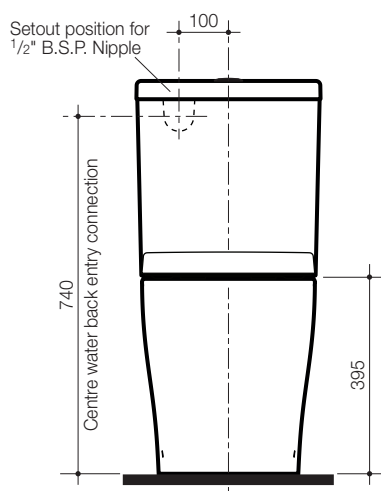
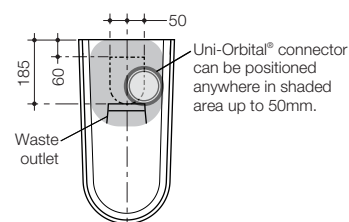
**Uni-Orbital<sup>®</sup> Connector  
Setout Range 60mm to 185mm  
(up to 50mm sideways  
adjustment)**



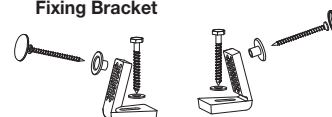
**Luna Wall Faced Close Coupled  
Toilet Suite with Xena Soft  
Close Seat**

**Code No.**

4.5/3 litre Bottom Inlet Internal Overflow	829710
4.5/3 litre Back Entry Internal Overflow	829720



**D82 Concealed  
Fixing Bracket**



**Note:** All height dimensions to underside of pan, make allowance for bedding when installing.

**Bedding:** The pan should be fixed to the floor with a sand cement mixture of 3:1 to a depth of 60mm. Do not use lime or fast drying cement in the bedding mixture. When bedded the back of the foot of the pan should be approximately 10mm above the finished floor.

**Bracket fixing:** The pan should be bedded with an acetic cured silicone sealant and fixed with the D82 Fixing Brackets supplied.