

Caroma®

CI/SfB	(74.4)	g3
Date	November 2015	

Supersedes all previous issues

Small Laboratory Sink

Nominal Size 305mm x 305mm x 225mm

7.07.1

Medium Laboratory Sink

Nominal Size: 375mm x 375mm x 265mm

Large Laboratory Sink

Nominal Size: 405mm x 480mm x 265mm



Caroma®

Laboratory Sinks

Vitreous China Laboratory Sinks



A range of plain outlet, straight sided Laboratory Sinks as detailed below:

Small Laboratory Sink 305mm x 305mm x 225mm nominal, centre outlet, max. capacity 10 litres
– Code No.674101.

Medium Laboratory Sink 375mm x 375mm x 265mm nominal, centre outlet, max. capacity 15 litres
– Code No.674102.

Large Laboratory Sink 405mm x 480mm x 265mm nominal, offset outlet, max. capacity 25 litres
– Code No.674103.

Tap Holes: **Laboratory Sinks** – None. The sinks are intended for installation with counter top mounted laboratory cocks etc. The Laboratory Sinks have light glazing on the external surfaces.

Waste Outlets: Plain outlet only, suitable for 50mm standard waste assemblies (not supplied). For duty involving acid and other corrosive wastes, special waste assemblies may be required (not supplied).

Fixing: For under counter applications: **Aluminium Clip Bracket** (not supplied), use for fixing basin to marble or granite counter top. Four brackets are used with each sink. For custom applications the client must provide own custom bracket system.

Colours: White only.

Dimensions: All dimensions are in millimetres and are subject to normal manufacturing variations. Caroma pursues a policy of continuing improvement in design and performance of its products. The right is therefore reserved to vary specifications without notice.



Small
Laboratory Sink

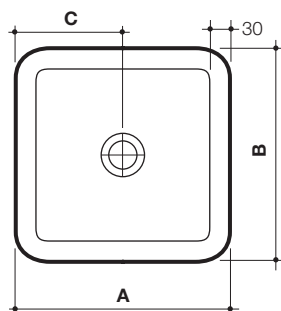


Medium
Laboratory Sink

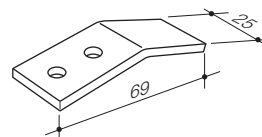
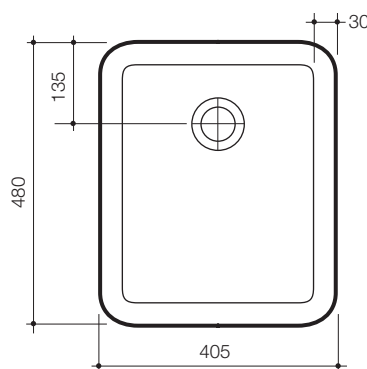


Large
Laboratory Sink

Small and Medium Laboratory Sinks

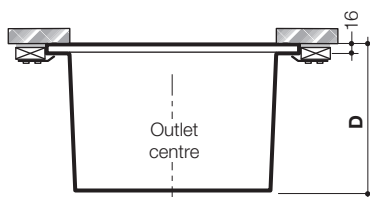
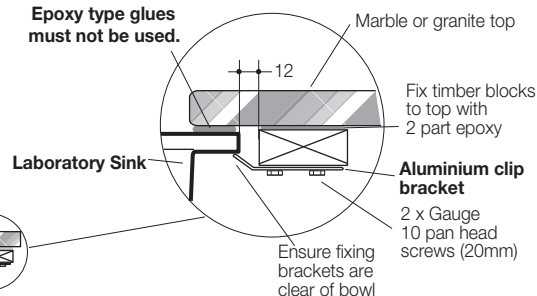


Large Laboratory Sink

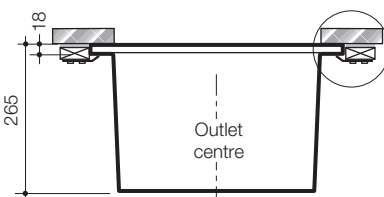


Aluminium clip bracket
Code No.813734

IMPORTANT
Under counter
marble top fixing
Use only an acetic
cured silicone sealant.
Epoxy type glues
must not be used.

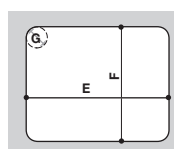


Takes 50mm diameter
standard waste assembly



Takes 50mm diameter
standard waste assembly

Cut-out Size



**Counter top Cut-out for normal
under-counter installation**

	E	F	G
Small Laboratory Sink	220	220	20
Medium Laboratory Sink	286	286	20
Large Laboratory Sink	384	304	20

	A	B	C	D
Small Laboratory Sink	305	305	152	225
Medium Laboratory Sink	375	375	187	265