

## Neion wall faced intelligent toilet pan and Arcisan in-wall cistern

NEO41005

**Package comprised of:** Neion wall faced intelligent toilet with remote and Arcisan Slim concealed cistern.



### Neion wall faced intelligent toilet pan with remote

NEO41250



### Arcisan Slim Concealed Cistern

ARO4430

## Neion wall faced intelligent toilet with remote

NEO41250

**Power:** 950W

**Rated voltage:** AC220 - 240V, 50-60Hz

**Water proof rating:** IPX4

**WELS:** 4 stars - 3/4.5L

**WELS License / Reg No:** 1483 / L06553

**Set-out:** S-trap 90mm  
P-trap 180mm

**Finish:** White

### NOTE!!!

IMPORTANT – refer to the installation guide for correct install criteria.

The Neion floor mount water closet pan with integrated bidet seat complies with WMTS-051.

Bidet seat has integral break tank with air gap complying with AS 2845.2. Thus it meets the High-Hazard backflow prevention requirements of AS/NZS 3500.1 without the need for a RPZ valve.

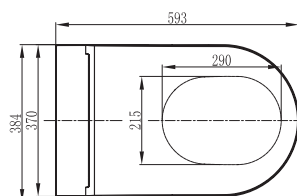
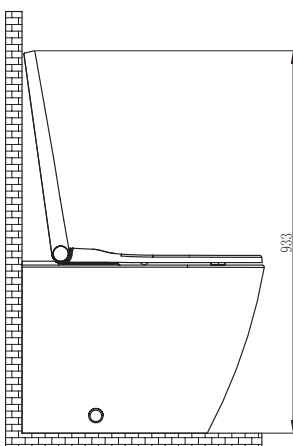
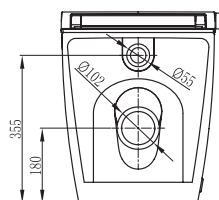
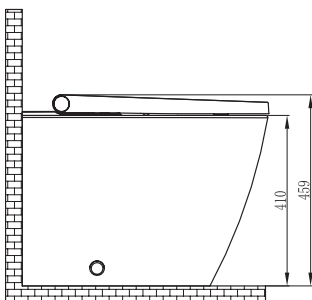


The Neion intelligent toilet, by Arcisan, was created by combining the aesthetics of a rimless toilet pan with the cleaning function of a bidet.

It may be compact in size but is not short on features! With a soft-close wrap seat, it also hosts a 2-user memory, so you can easily program your specific requirements. The Neion is fully customisable with gender specific functions, massage function, drying functions, pressure increase / decrease, air temperature controls, water temperature controls, LED night light and deodoriser (using a diatomaceous mud filter).

These functions are accessible through the easy to use remote control. There is also a quick access option for the basic functions, by simply using the control knob on the side of the seat.

Boasting a hard wearing, rimless ceramic pan and a nozzle that is self-cleaning before and after every use plus the tank runs a self-cleaning mode if left in standby for an extended period of time.



## Slim Concealed Cistern

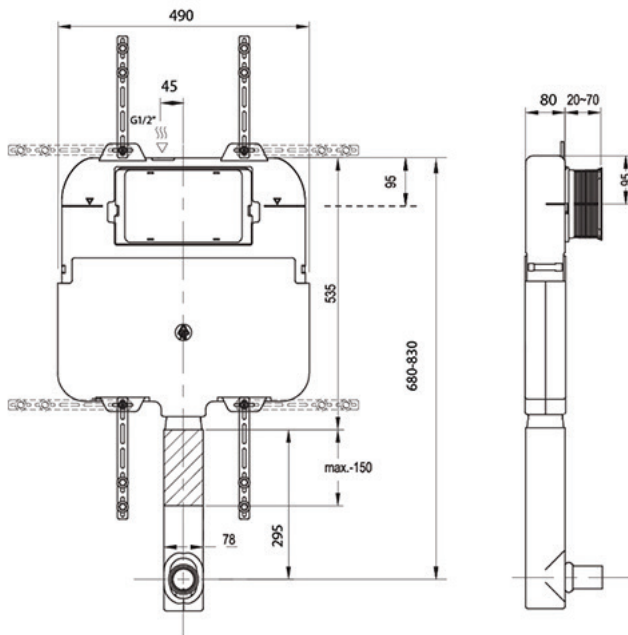
ARO4430

**WELS:** 4 star

**Litres/min:** 4.5 / 3

**Inlet Position:** Top left

**Material:** High density polyethylene



The slim concealed, dual flush cistern is made from high density polyethylene, incorporating inbuilt overflow. Due to it's slim design, the cistern can be installed in a standard 90mm metal or timber stud wall application.

**WARRANTY**  
10 years

\*Conditions apply.

streamline

www.streamlineproducts.com.au | Ph: 1300 735 352

Dimensions are in millimeters and are subject to manufacturing variations. Streamline reserves the right to vary specifications at any time without notice. Information provided within this specification sheet is correct at the date of printing. Please confirm all particulars with your sales consultant prior to purchase.  
Version: 1.1 - October 2017