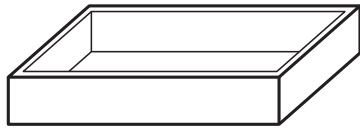


# Wall Mount Sink Installation (Masonry Wall)

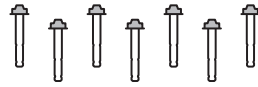
Mount these basins bracket **before** tiling:

Shelf Oval, Bowl + Bowl (two tone), Cube, Box + Box (two tone), Pill, Prism Circle + Rectangle, Stepp Circle and Rectangle, Hoop, Vesl Square and Rectangle, Tubb, Funl.

## YOUR WALL MOUNT SINK KIT WILL CONTAIN:



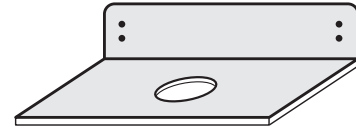
CONCRETE SINK X 1



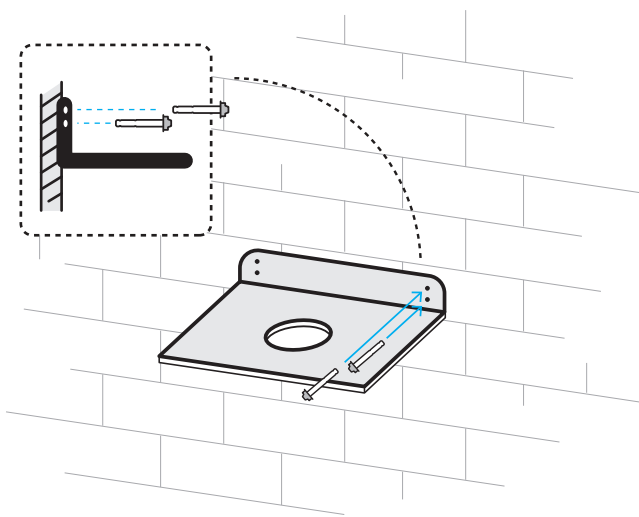
BOLTS



GLUE

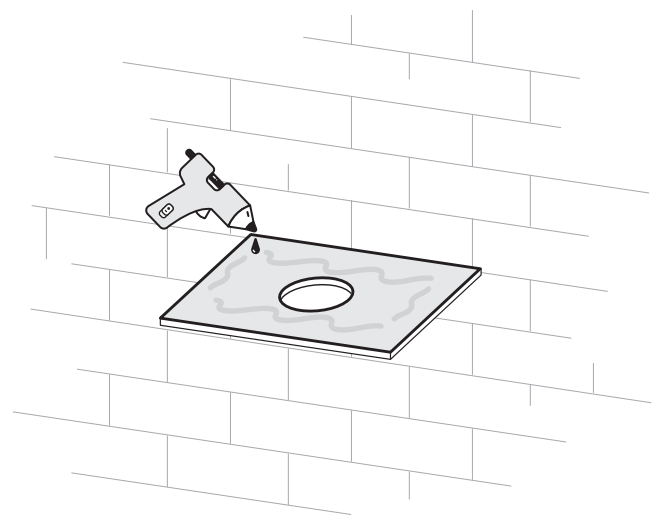


WALL MOUNT PLATE  
(DESIGN VARIES PER SINK)



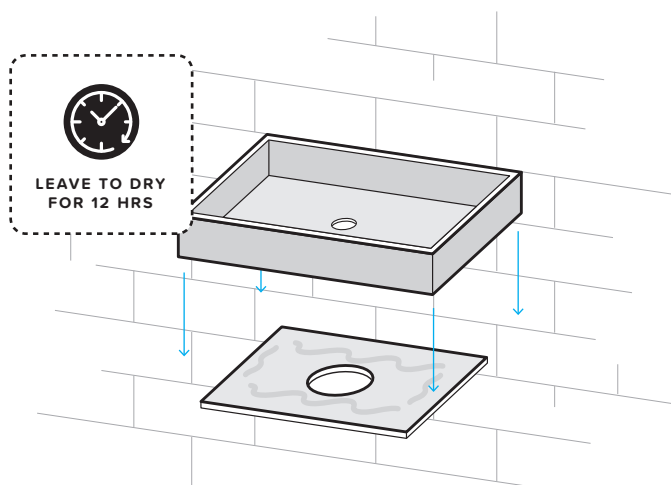
01

Bolt bracket to masonry wall, ensuring bracket is placed at level height



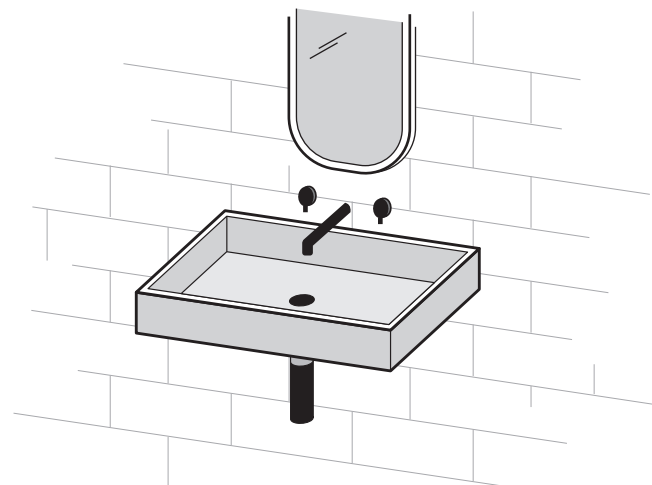
02

Render and tile wall, then apply adhesive to bracket



03

Lower basin onto glued brackets firmly, ensure basin is placed centrally



04

Allow glue to dry for 12 hours prior to installing plumbing fixtures. Enjoy.